

TIME AND TIDE: THE WILHELM HESTER COLLECTION

Rose La Follette (Residential MLIS) and Kathleen Magellan (Residential MLIS)

SPECIAL THANKS TO NICOLETTE BROMBERG,
VISUAL MATERIALS CURATOR FOR UW
SPECIAL COLLECTIONS

The Project

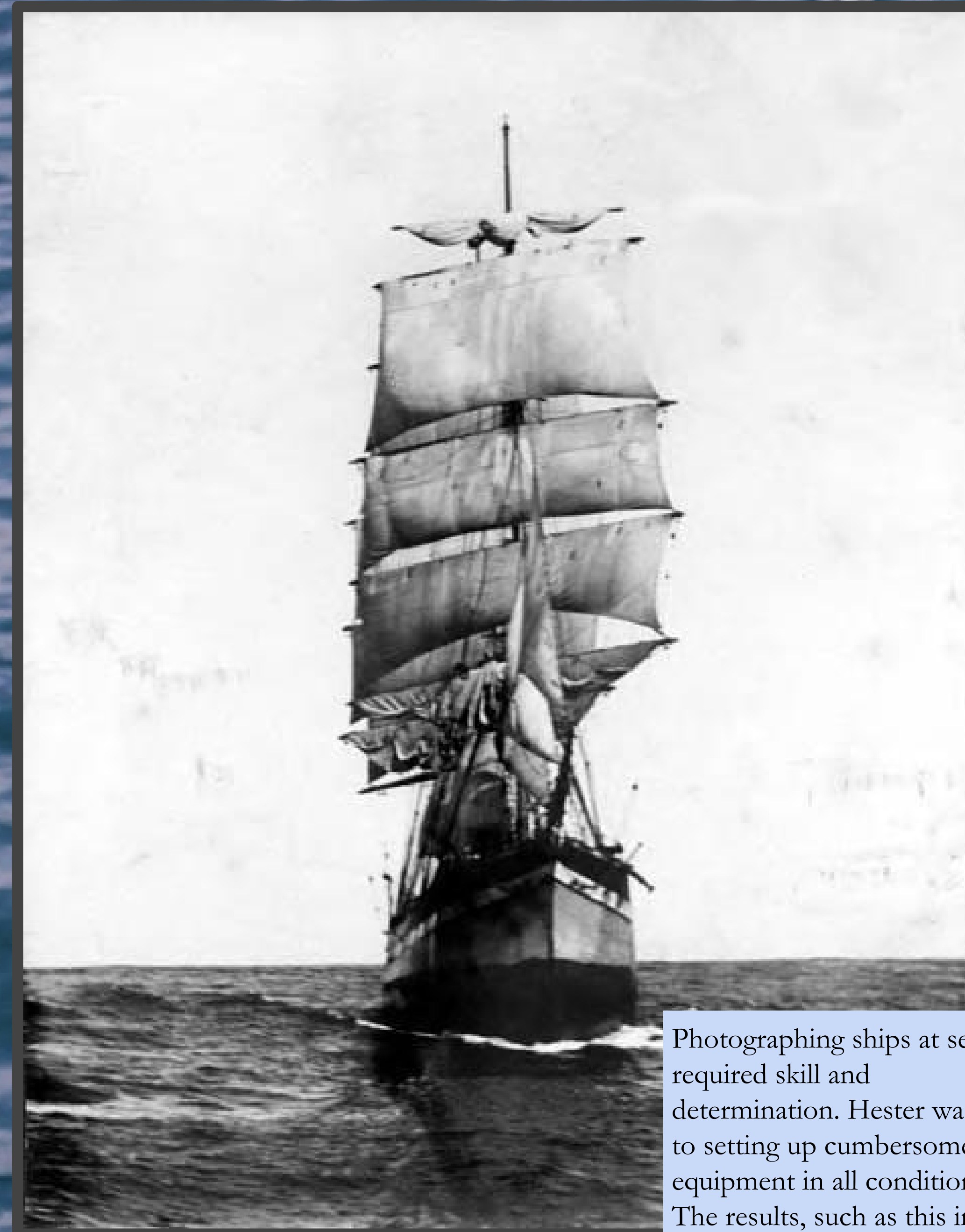
- The collection
 - German-born photographer Wilhelm Hester
 - 1,300 photographs covering turn-of-the-century Puget Sound and the Klondike Gold Rush
- The need
 - Scholars need access
 - Collection needs re-housing



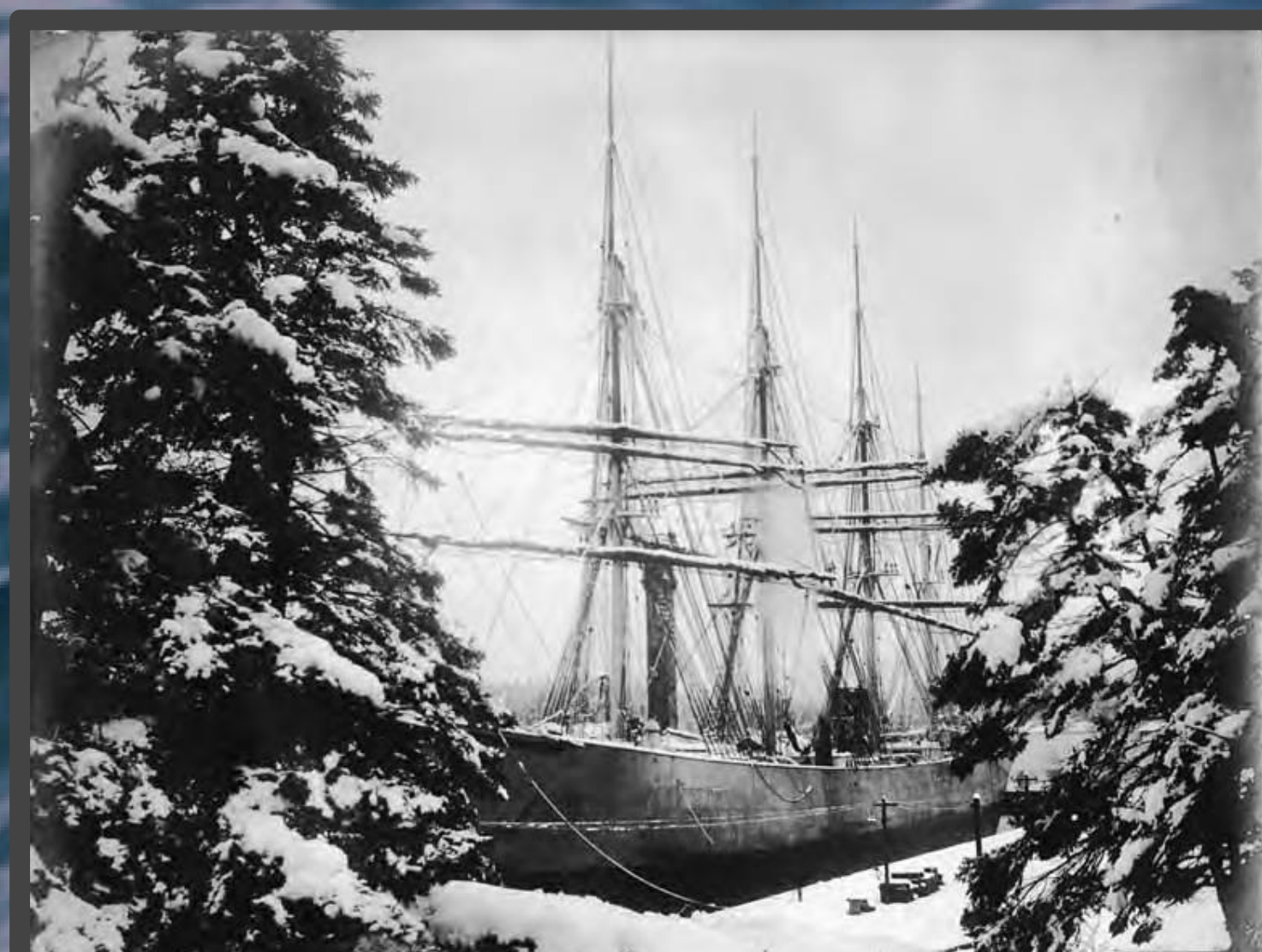
Sailors aboard the *U.S.A.T. Burnside* strike a pose for the camera - note the ship's name stitched across the sailors' caps.



Many captains brought dogs with them on long voyages, either as beloved pets or working members of the crew. Here, Captain C.H. Jensen poses with his dog.



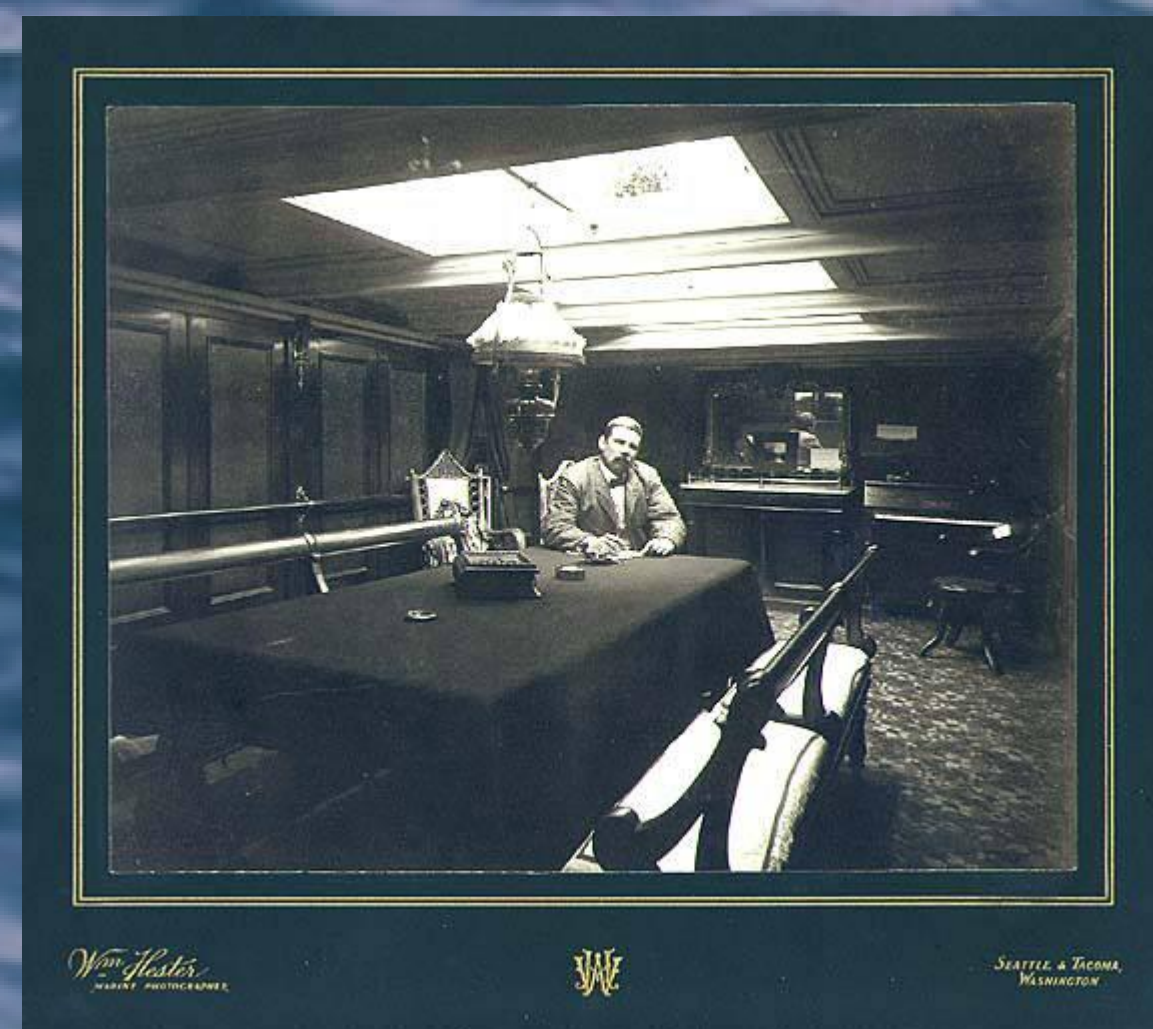
Photographing ships at sea required skill and determination. Hester was used to setting up cumbersome equipment in all conditions. The results, such as this image of the British ship *Durbridge* under full sail, were spectacular.



Snow and ice presented a serious danger for ships, but also resulted in breathtakingly lovely scenes.



Captain George Zingler poses on the deck of the German ship *Flottbeck* with his family, friends, pet dog, and decorative potted palm trees.



The captain's cabin was often handsomely furnished to impress crew and visitors, and to provide a suitable atmosphere for conducting business while in port. Here, Captain W. Learmont of the *Cleomene* pauses while writing a letter.

The Process

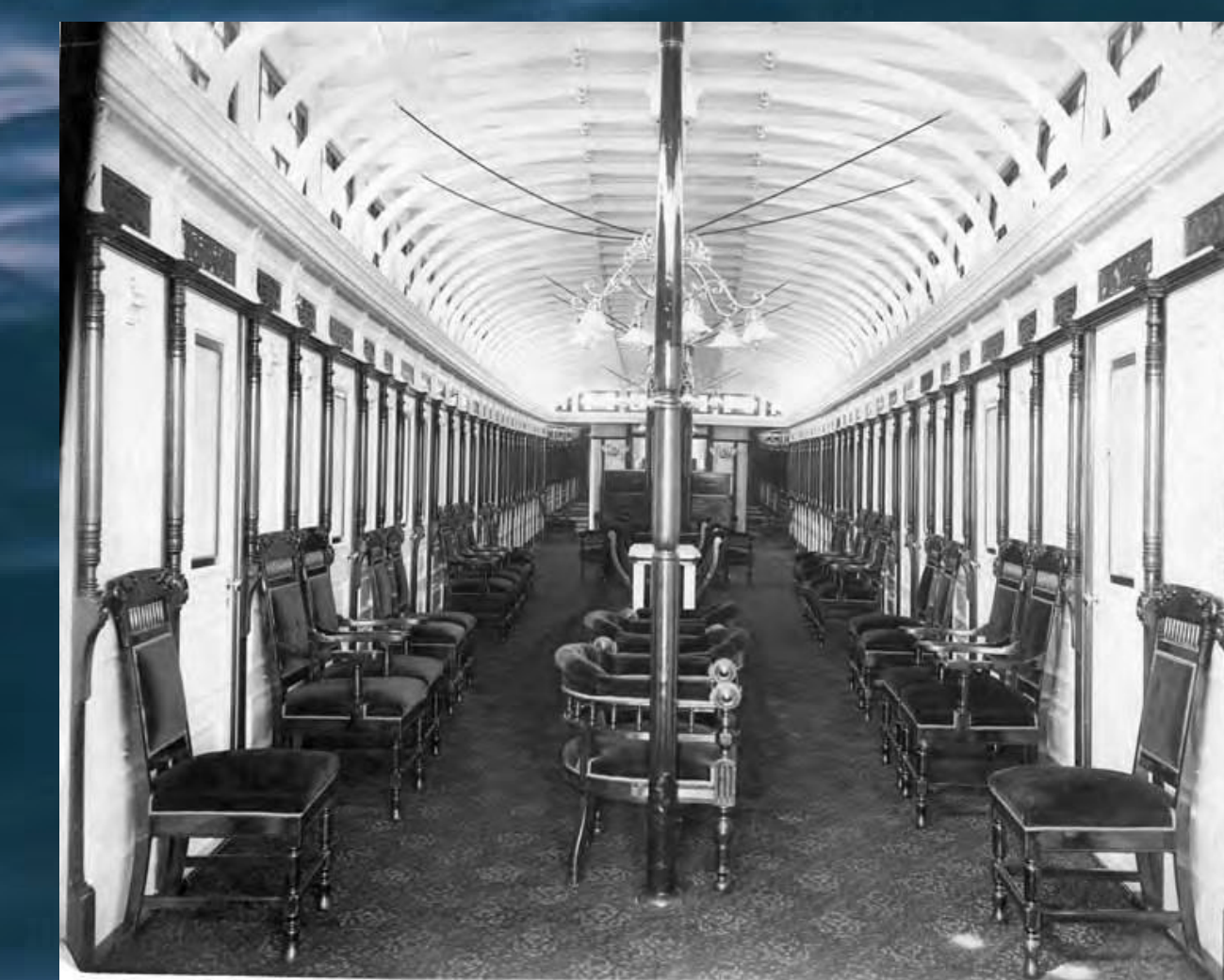
- Preservation
 - Remove from acidic sleeves
 - Replace in acid-free housing
- Intellectual Arrangement
 - Title or location? Or both?
- Description (EAD Creation)
 - Collection, sub-collection, and item-level groupings

The Result

- Stable, secure housing
 - Easy-to-use online finding aid
 - Helpful arrangement facilitates discovery...
- ... and benefits future research!



Many luxury craft plied the waters of Puget Sound. Here, revelers enjoy glasses of beer aboard the *L'Amorcier*.



Some ships, such as the *City of Seattle*, had lavishly-decorated interiors.