

## Test takers after every competitive exam?



## How PrepSmart addresses their concerns?



Compares their performance with peers

- Similar test takers are clustered based on scores and the clusters are ranked by performance. Migration of user between the clusters is tracked



In-depth Analytics at subject level

- Provides detailed analysis of scores at a subject level
- Identifies strengths/ weaknesses of the test takers



Provides personalized recommendations

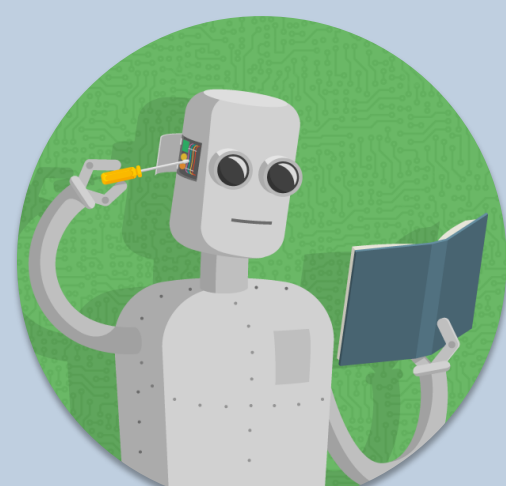
- Recommends features of similar test takers, who have improved their scores

## How PrepSmart is built ?



Data Collection (MySQL)

- Data Exploration
- Data Cleansing
- Feature Selection



Modeling (Machine Learning)

- Transformation
- Normalization
- Clustering (K – Means)



Analytics

- Rank Clusters
- Identify similar test takers who have improved (KNN)
- Build user story
- Generate recommendations