

# Edmond S. Meany Collection

## Critical Cataloging and Archival Description

Diane M. Mello | Master of Library and Information Science | iSchool |



### Examining and Processing Photographic Collections

The Edmond S. Meany collection, was inspired by my interest with the role archivists and librarians fulfill when describing resources, within catalogs and finding aids, while acknowledging our legacy descriptions may contain terminology which is now considered outdated and / or harmful.

### Information Challenge

**Retention of original description** provided by the collection's creator is important for understanding historical context; however, this language may contain terminology which is now understood to be racist, sexist, colonialist, homophobic, misogynist, ableist, gender normative or other offensive terms that may cause harm and insult.

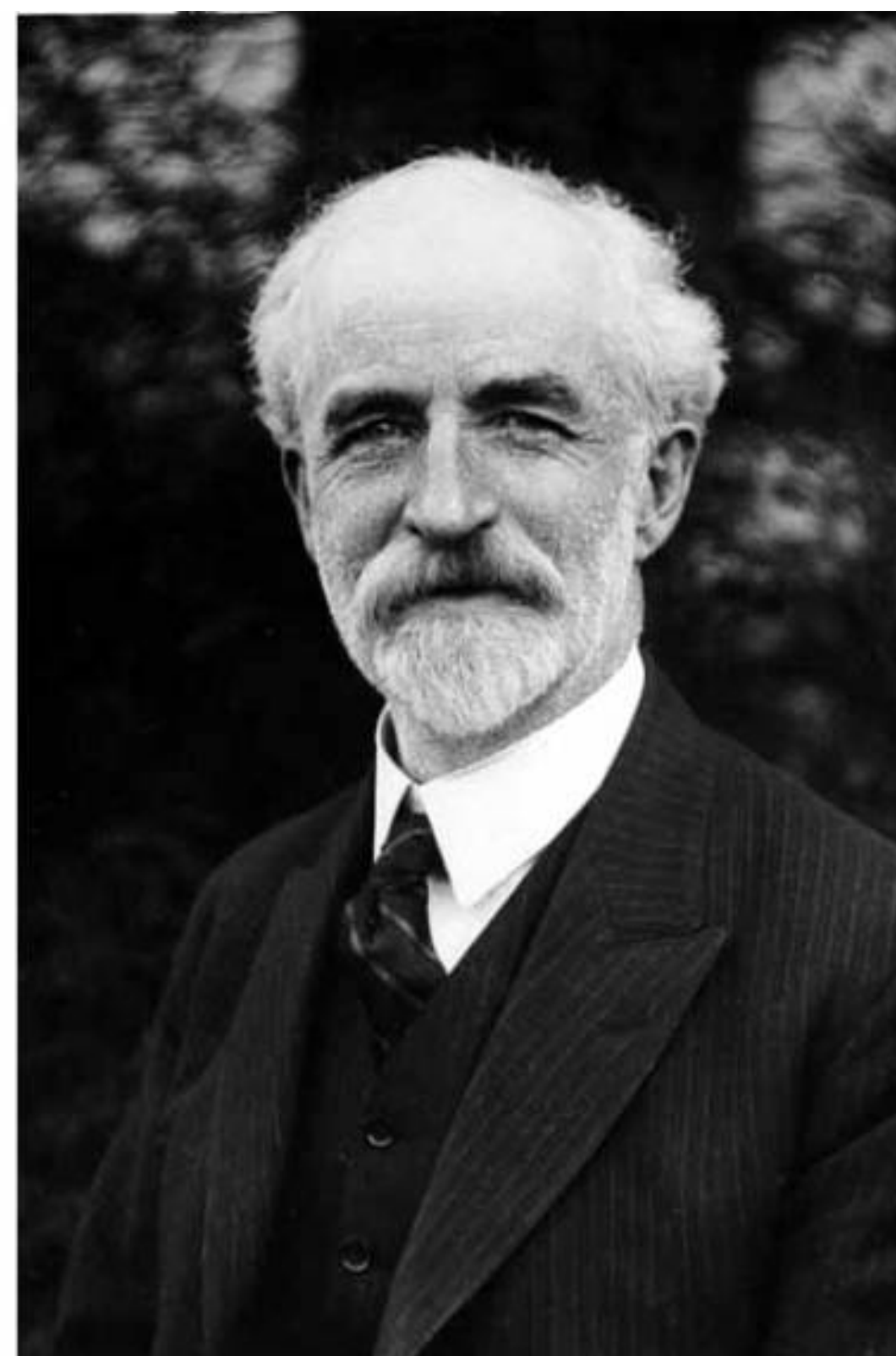
**Preferred terminology** by people and their communities to refer to themselves has shifted.

Biased, outdated and problematic terminology within the Library of Congress Subject Heading and other controlled vocabularies continues to exist.

### Access

Create accessibility for researchers

Maximize use of materials through UW Digital Collections and Archive West



Property of MSCUA, University of Washington Libraries. Photo Coll 563

### Benefits

**Assess and update** general statements of sensitivity for inclusion with collections.

**Develop documents of intent** focused on sustaining diversity, creating an inclusive experience for our users, and confronting institutional bias and structural racism.

**Reframe the descriptive process as iterative.** Revision is continuous and evolving and requires a commitment to continue to learn and adjust.

### Collaborative Approach

**Positionality** Identify, share and welcome positioning of the researcher in relation to the social and political context of the study—the community, the organization or the participant group.

**Intent** Sustain diversity, creating an inclusive experience for our users, and confronting institutional bias and structural racism. Revision is continuous and evolving and requires a commitment to continue to learn and adjust.

**Collaboration** Engage with networks, scholars of specific people and community members dedicated to the time consuming, diligent detail of remediation of language.

### Physical and Intellectual Processing of Materials

Research background and identify people, places, and context of materials

Determine order, develop series and subseries

Consult and collaborate with scholars of photographic collections and topics of descriptive terminology

Encode and link data with XMetal Editor and Archive Space

