



Shared Folder Access Review

Guiding Group Health Towards ePHI Security



2,000 employee accounts potentially contain electronic Personal Health Information (ePHI).

300 Active Directory Groups lack rules governing access to their data.

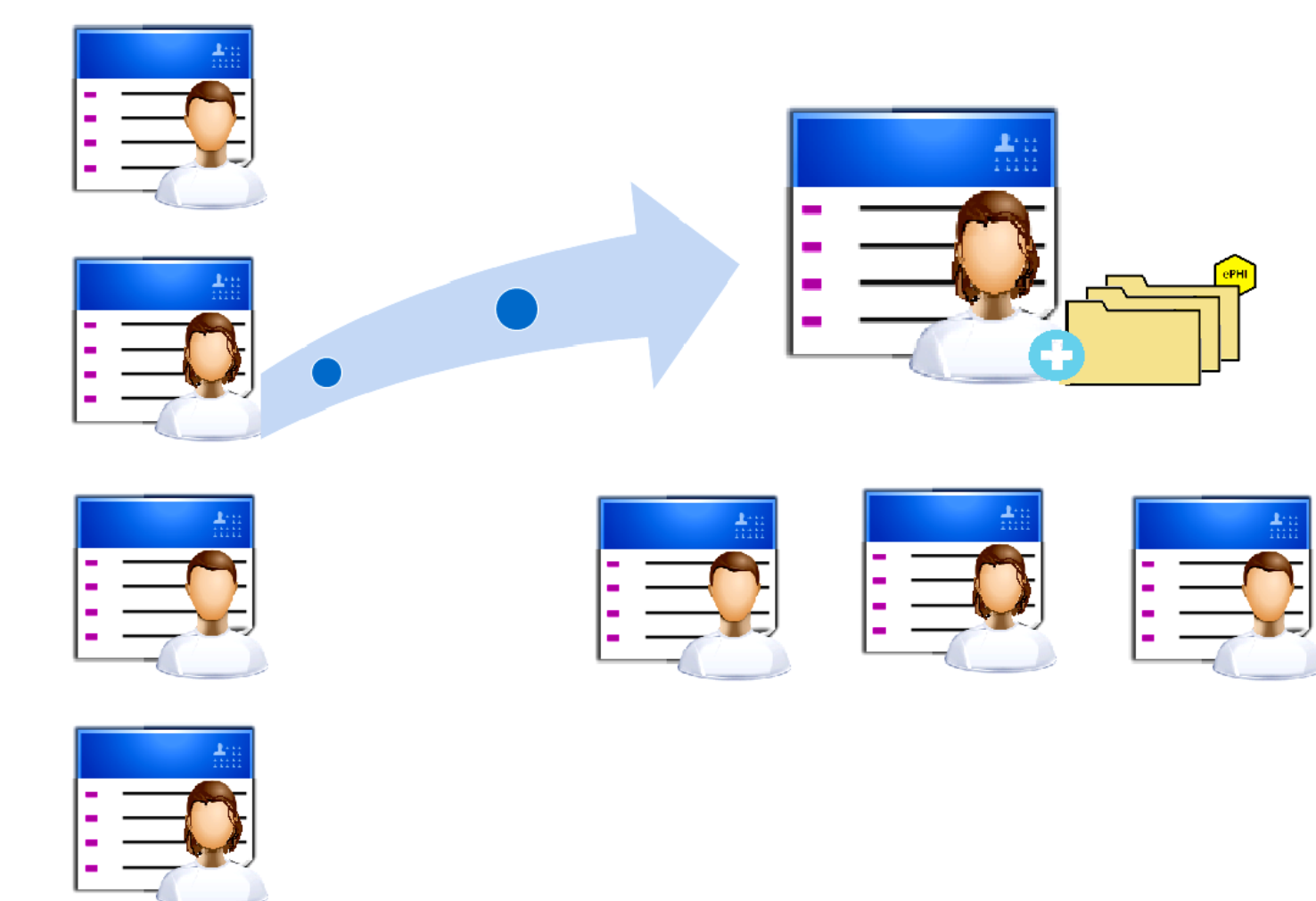
79 business leaders need help with understanding the data they own.

How can Group Health ensure that only authorized employees have access to ePHI data?

Problems

- Privilege creep**
Excessive access through tenure
- Stale data**
Outdated data that is no longer used
- Orphan accounts**
Existing accounts after their owners left GHC
- Multiple permissions**
Several Data Owners grant permission to the same folder

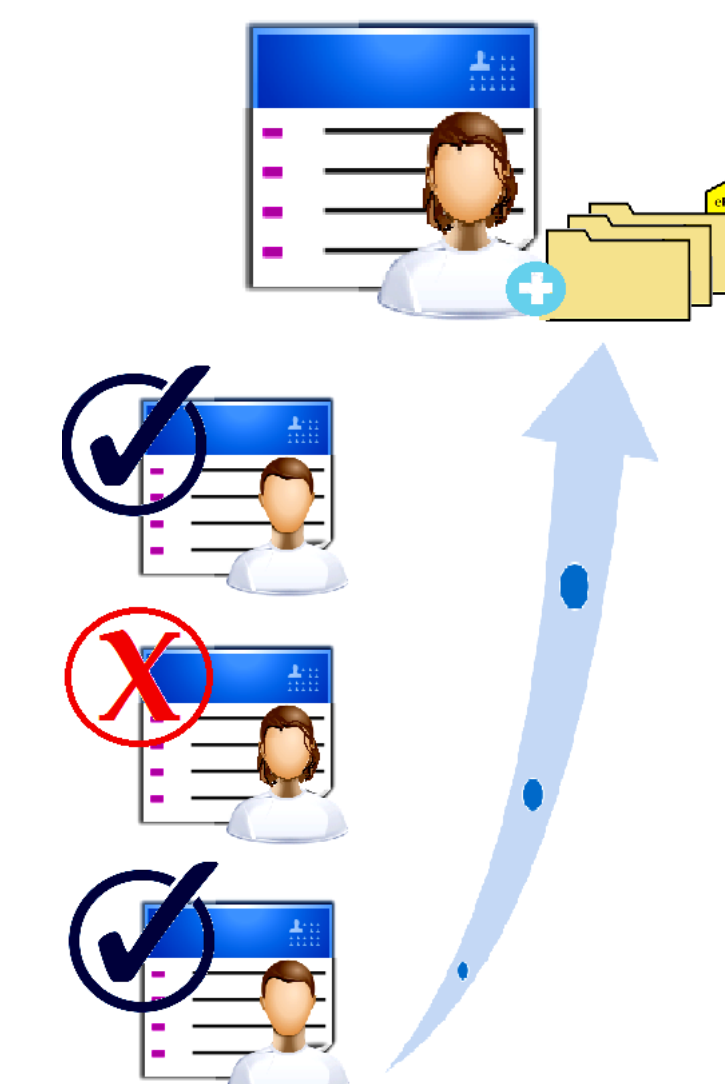
Solution



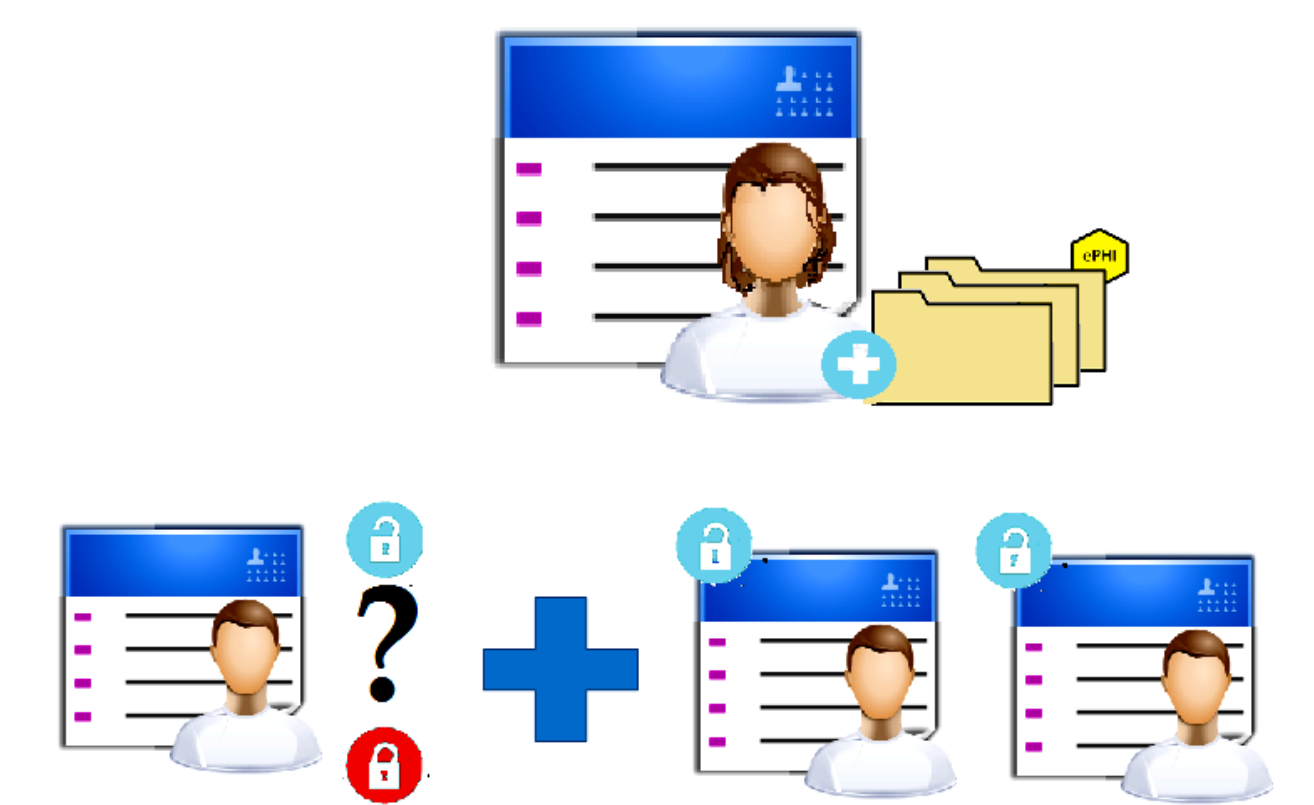
Step 1 | Identify Active Directory Group Owner
Identify AD Groups which contain ePHI data and determine probable ownership



Step 2 | Demonstration of Access Review Process
Show AD Group Owners the IAM-SAT Tool and facilitate demonstration of process and tool

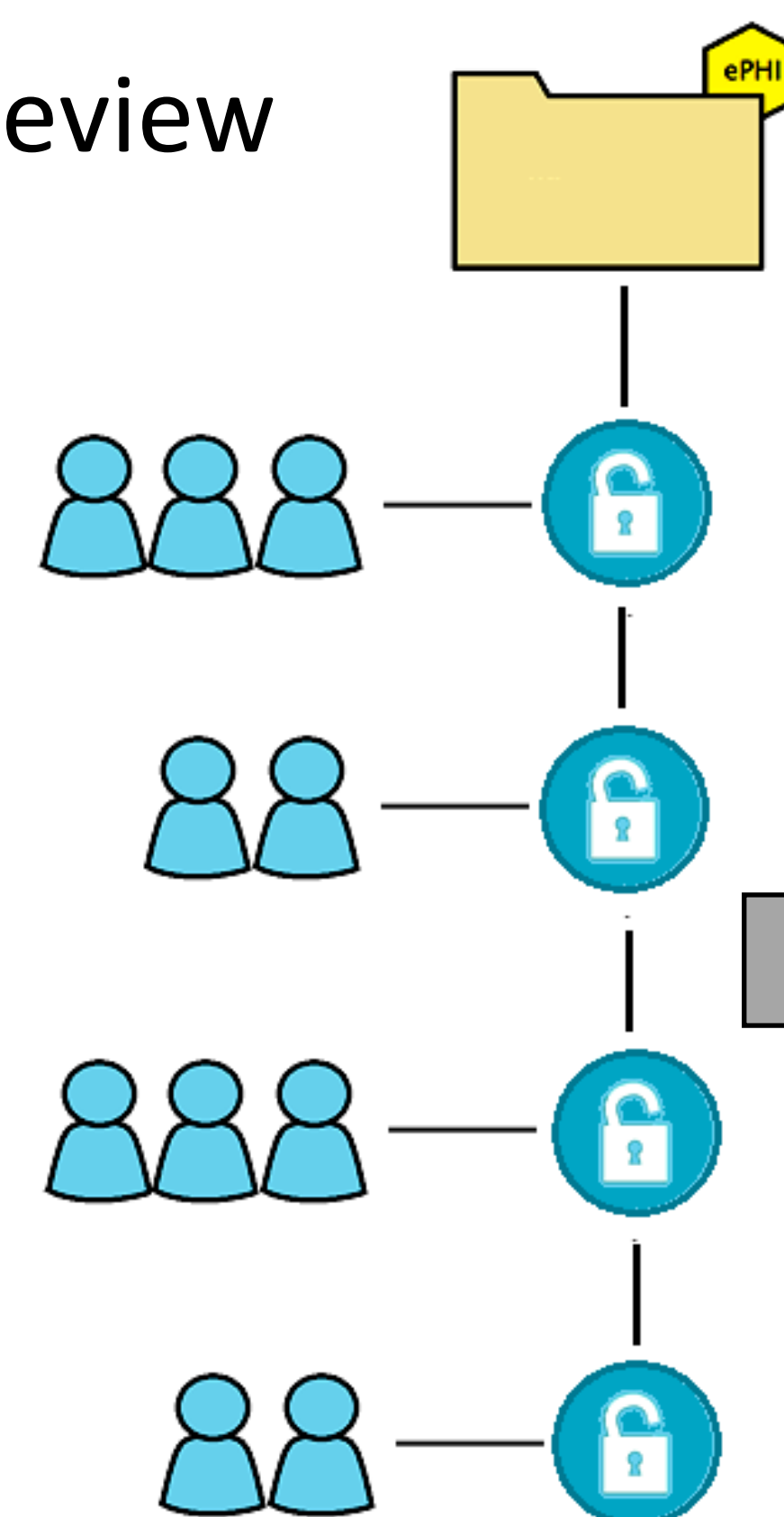


Step 3 | Support Access Review
Activate access review

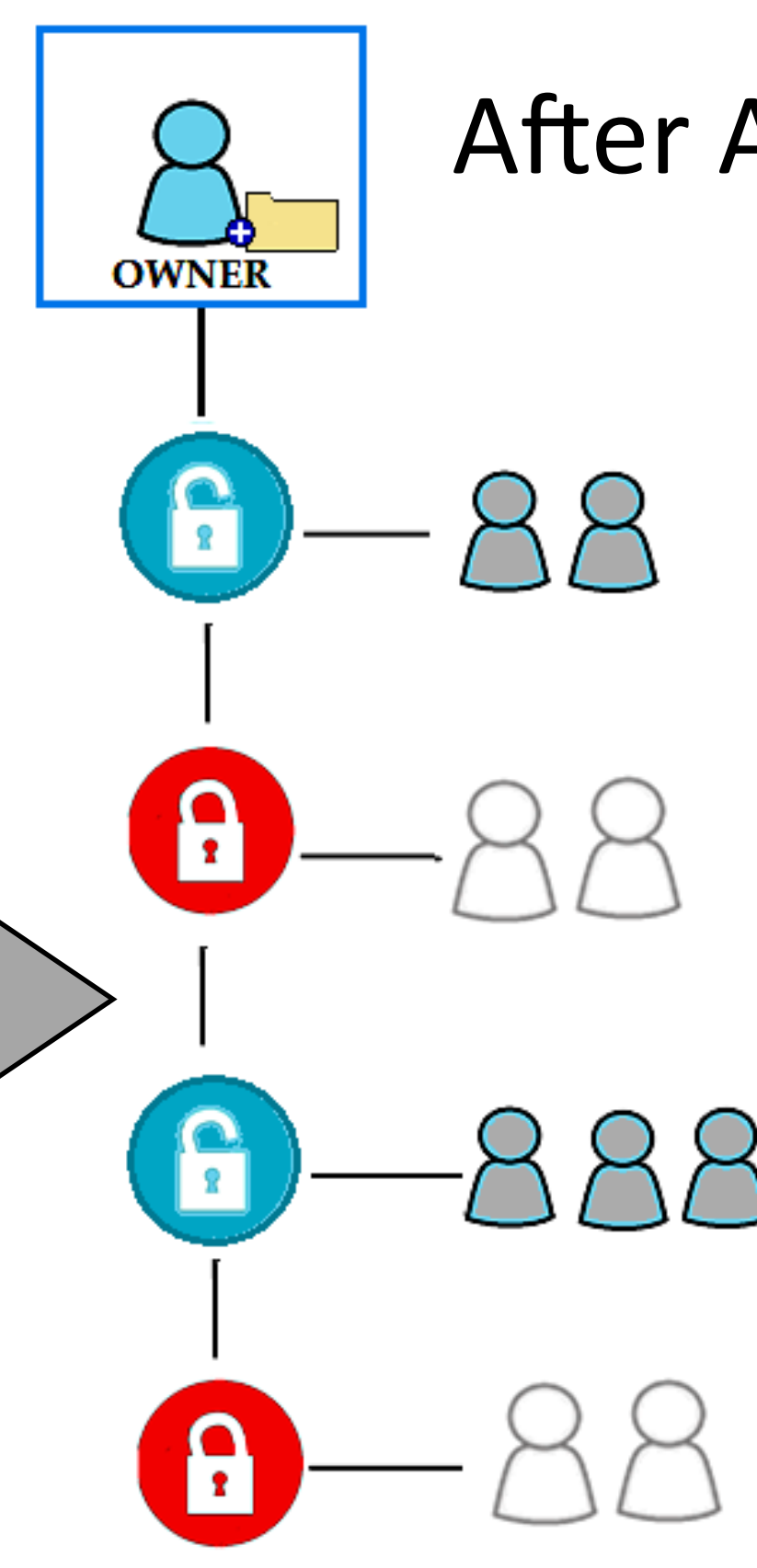


Step 4 | Permission Precedence
Create and administer permission survey and set permissions in IAM-SAT

Before Access Review



After Access Review



“This Capstone Project has helped develop a review process that will be the standard for years to come to ensure Group Health staff maintain the proper level of access.”

Impact

The end goal of the Access Review is making sure that only the right people have the right access to the right information.

