

Tracking The Puget Sound: HRCDash

WHO WE ARE



- Jeffrey Seward (MSIM)
- Amanda Cummings (MSIM)
- Edmund Deng (MSIM)
- Vichit Mike Sitthideth (INFO)

THE PROBLEM

WDFW has invested in the development of cutting-edge new data collection and analysis techniques to track land cover change throughout the Puget Sound...

... but how do we make this data **open** and **accessible** to both the **public** and **lawmakers** to help develop a better understanding of environmental changes?

TEAM MISSION

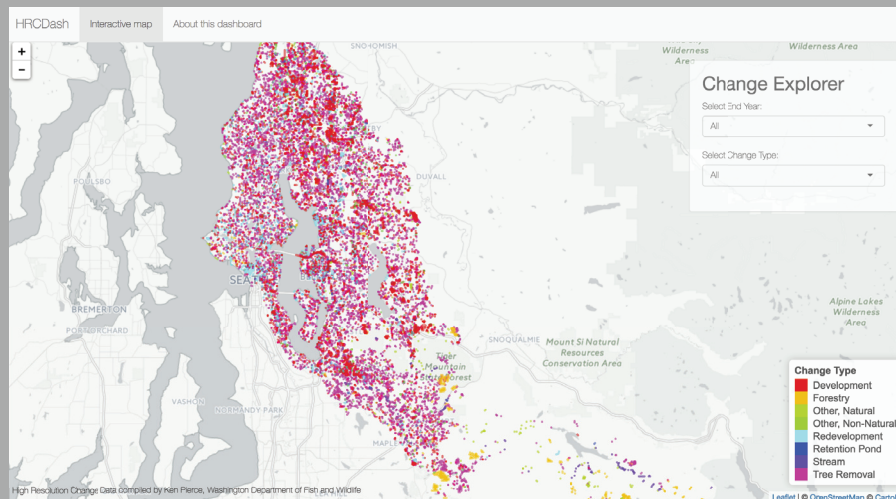
Data to the People: Allow people to see actual changes over time through land imagery with descriptions

Visualize Change: Leverage WDFW data to visualize the story of environmental change in the Puget Sound region

Keep It Open: Display high-resolution change data through an interactive, open source technology framework

OUR SOLUTION

The HRCDash



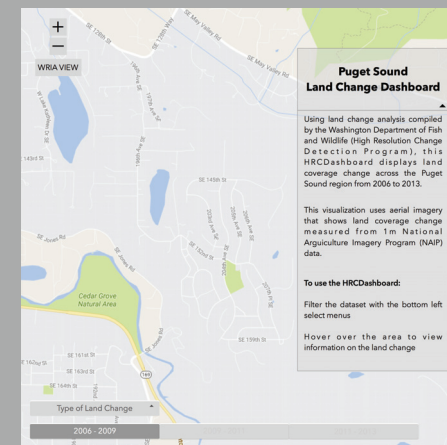
Fully functional Proof-of-Concept using one Water Resource Inventory Area

Future Steps: Integrate with the WDFW website and publish replicable code for remaining WRIsAs

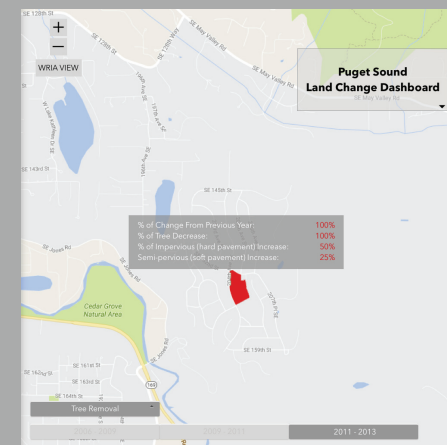
OUR DESIGN PROCESS

Discovery & Information Gathering
Paper Prototyping
Iterative User Testing
Technical Development

OUR PROTOTYPE



The prototype was developed and iterated from the discoveries we made during our user testing phase



The goal of our prototype was to ensure that our solution successfully meets our team mission before moving on to the development stage



WASHINGTON DEPARTMENT OF
FISH & WILDLIFE



Information School
UNIVERSITY of WASHINGTON