

Activist and Artist: Planning & Envisioning Selma Waldman Collection

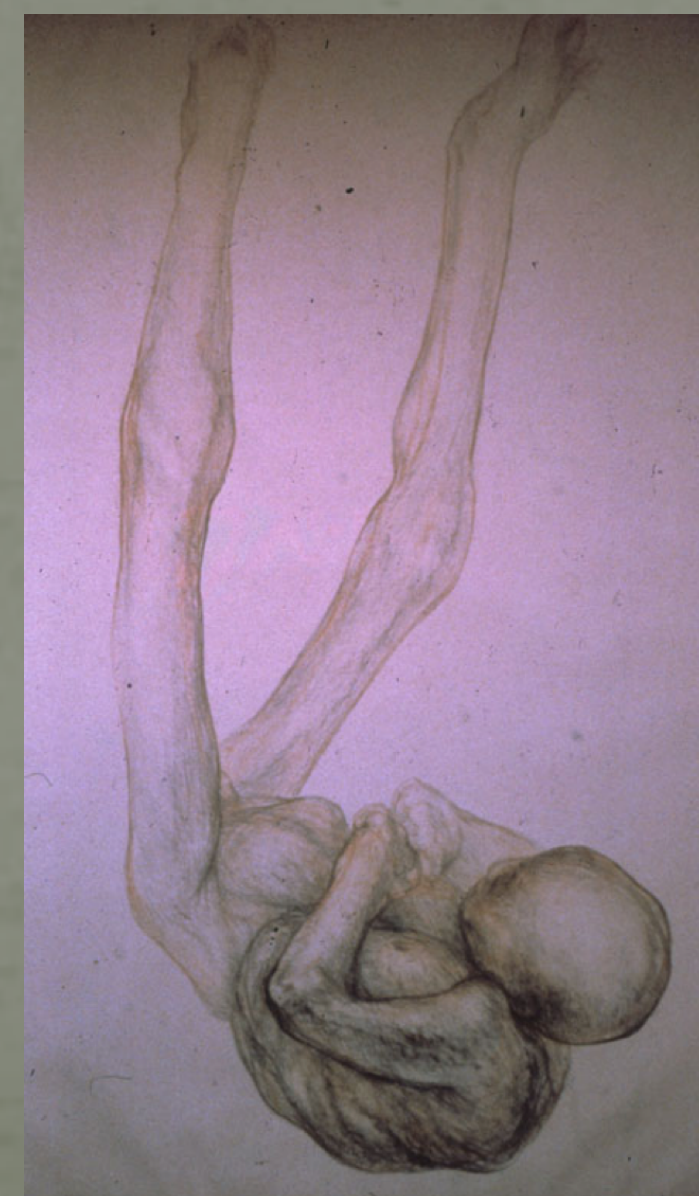
Goal:

- Finish processing the Selma Waldman Collection at the Seattle Public Library
- Design potential exhibits to display Selma's life and work



Process:

- Sort through the remaining boxes of correspondence, marginalia, and professional writing
- Investigate the collection as a whole for common themes; create two potential exhibits for SPL
- Use SmartDraw to design exhibits



Rebecca Hayes & Nicole Arnold
MLIS
Sponsor: Ann Ferguson, SPL



Outcome and Impact

- Allow SPL to finish and safely store the Selma Waldman Collection
- Share Selma's life and work with the greater public
- Make Selma more accessible to people in her hometown

