

Preserving the Institutional History of The Oregon Museum of Science & Industry

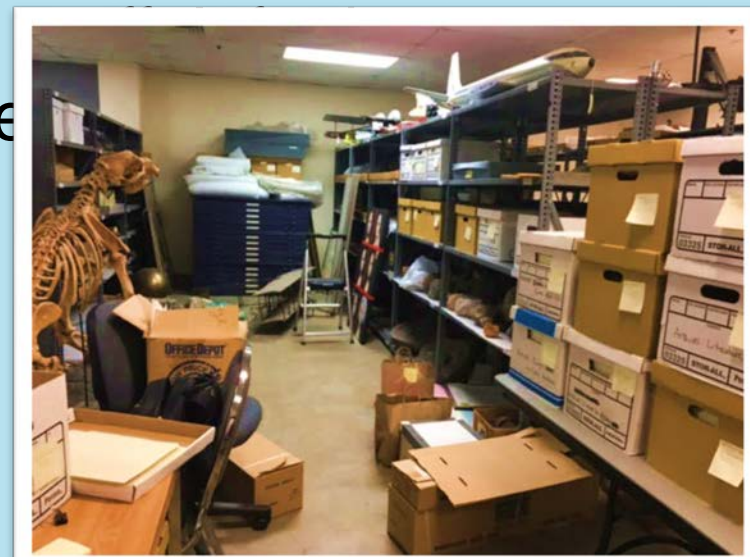
What is OMSI?

- ❖ Established in 1896, the Oregon Museum of Science & Industry (OMSI) is a large, non-profit museum located in the city of Portland Oregon.
- ❖ The overall mission: "Inspire curiosity through engaging science learning experiences, foster experimentation and the exchange of ideas, and stimulate informed action" (History & Mission, n.d.).
- ❖ Starting as a mere city hall exhibition, the museum is now housed in a state of the art science center on an 18.5-acre location
- ❖ Serves over 1 million visitors on and off site at distance education programs.
- ❖ Ranked as one of the top science centers in the United States with notoriety around the world (History & Mission, n.d.).

Project Overview

Creating the Structure of an Archive:

The Oregon Museum of Science and Industry (OMSI) is an integral piece of the Portland City Scape with a rich and vibrant history. The purpose of this project was to bring the OMSI institutional archives up to standard and increase accessibility, since a lack of information professionals on collections inaccessible and de



Program Objectives:

- ❖ Organization
- ❖ Accessibility
- ❖ Planning for the Future

Organization

- ❖ Step 1: Create collections according to archival practice
- ❖ Step 2: Arrangement of Institutional History Collection (Processing)
- ❖ Step 3: Supervise & Direct Volunteers in the preservation of photographs

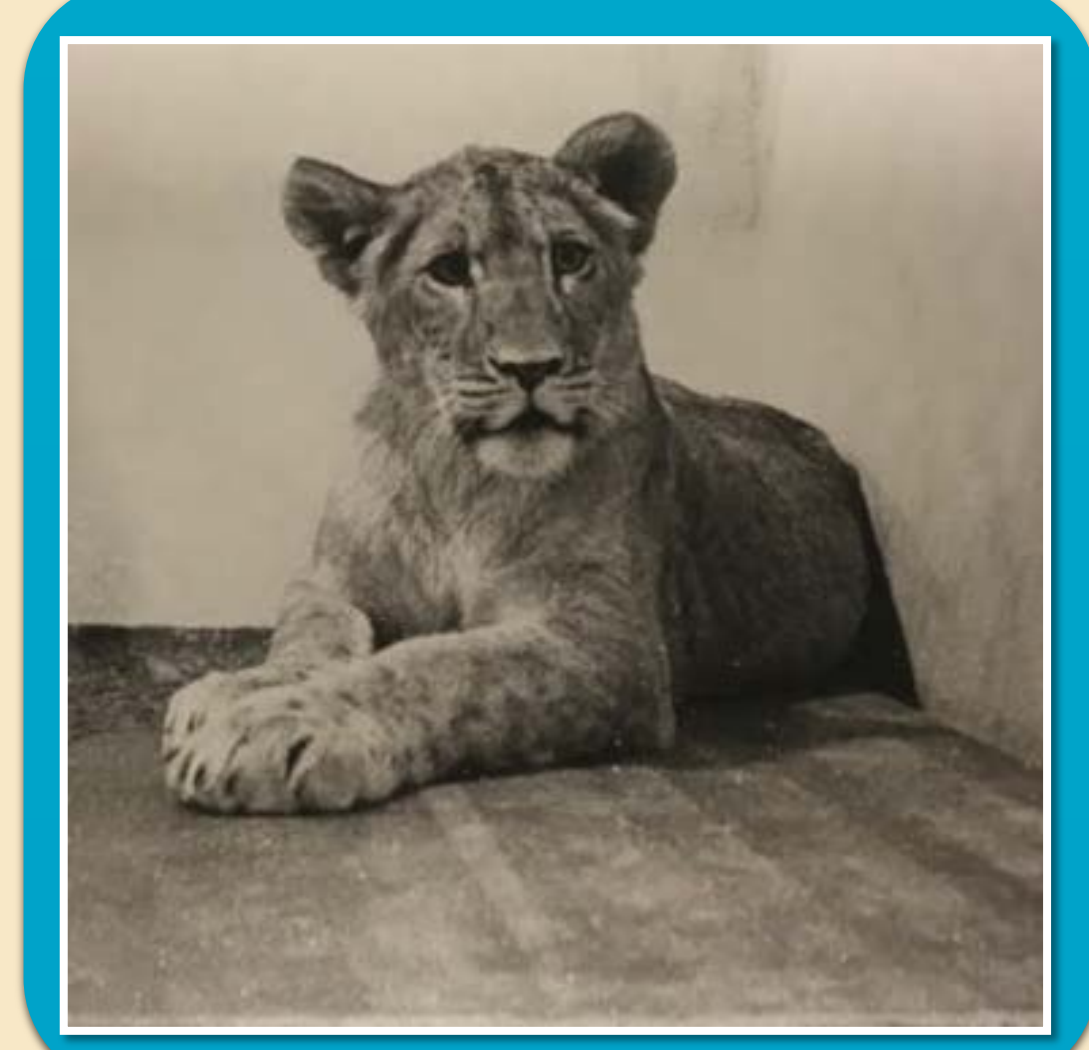
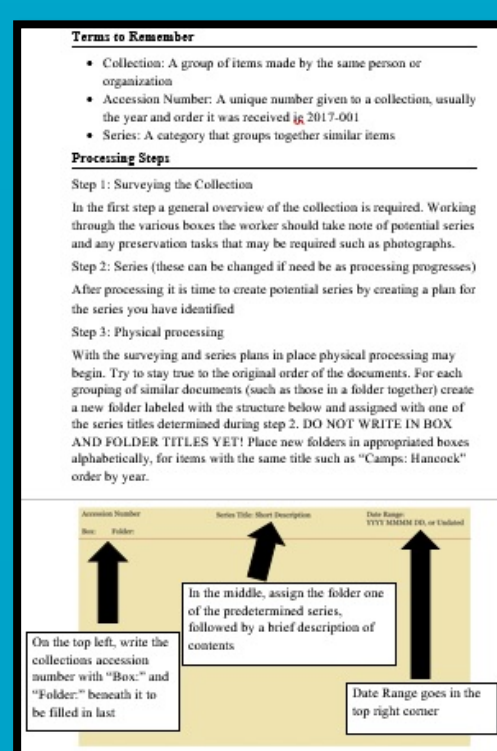
Accessibility

- ❖ Step 1: Input into PastPerfect Museum collection management Software
- ❖ Step 2: Create Finding Aid
- ❖ Step 3: Spread the word through email and presentations

The Future

- ❖ Step 1: Create Archival Processing Manual for OMSI Volunteers & Staff
- ❖ Step 2: Train volunteers in simplified archival processing, including theory & practice
- ❖ Step 3: Create and test a digitization plan for continued preservation of the OMSI photograph collection

Volunteer Training



Processing



So What?

With the culmination of this project, OMSI history will be properly preserved and documented. More importantly, the materials will be findable and useable by staff or volunteers as the museum enters onto the path toward external access. When it comes to locating specific requests, the newly created finding aid and organization will make short work of what was once a daunting task for the collections manager. With so many members and volunteers webbed into the history of the museum and the largest archival collection of materials on the Blueback Submarine, non-museum staff and volunteers deserve access to these records. Moreover, with the eventual completion of the digitization plan the thousands of community members who have participated in museum programming over its extensive lifetime will, for the first time, be able to view and utilize photographs that document those experiences.

