



Background

The Institute for Simulation and Interprofessional Studies (ISIS):

- A leader in simulation-based education at UW Medicine
- Applying cutting edge simulation educational techniques and resources to improve the quality of healthcare education and patients' safety

Goal Statement:

- Design a virtual collaborative network to connect simulation educators in the WWAMI (Washington, Wyoming, Alaska, Montana, Idaho) region

Problem

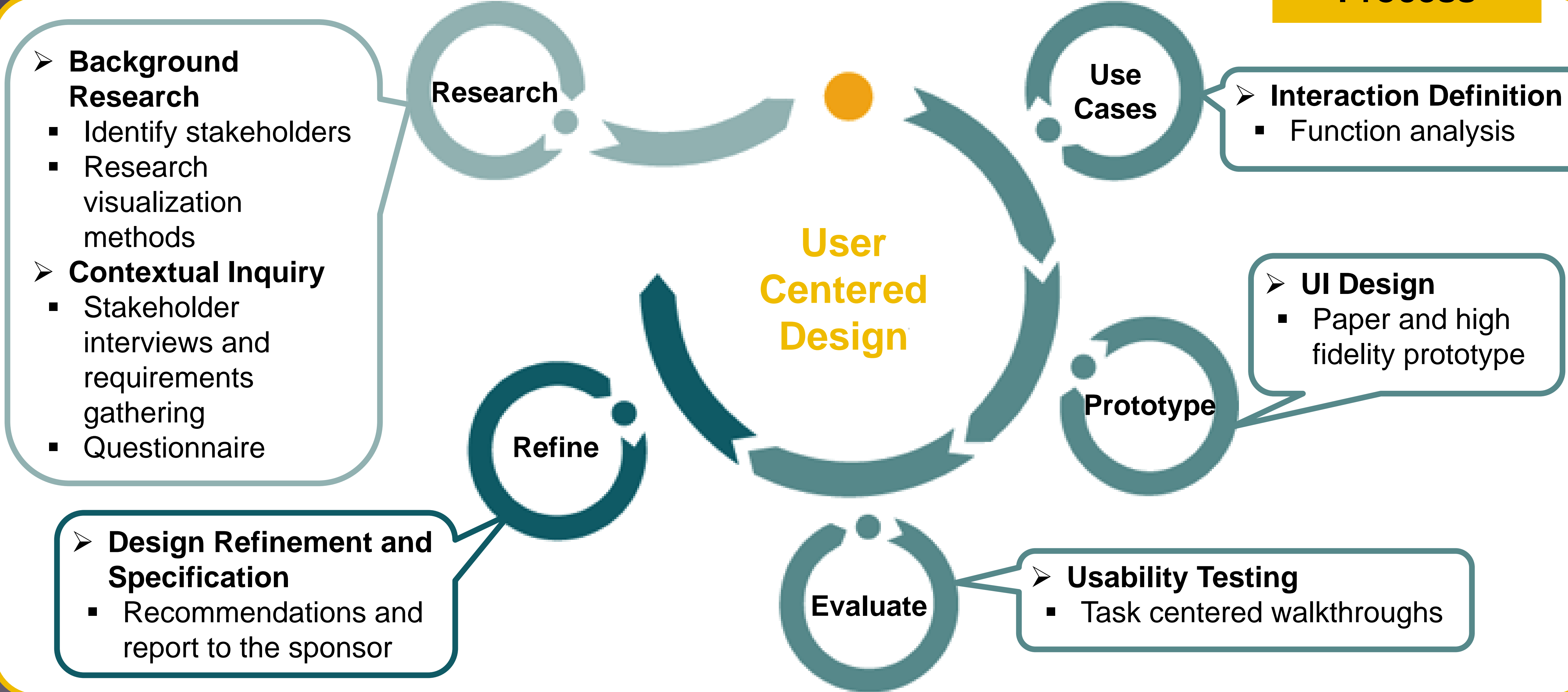
How to identify users that have the needs for simulation education and communication?

How to gather user requirements on the target group?

How to identify core and optional features of the network?

How to combine an interactive map with social media features?

Process



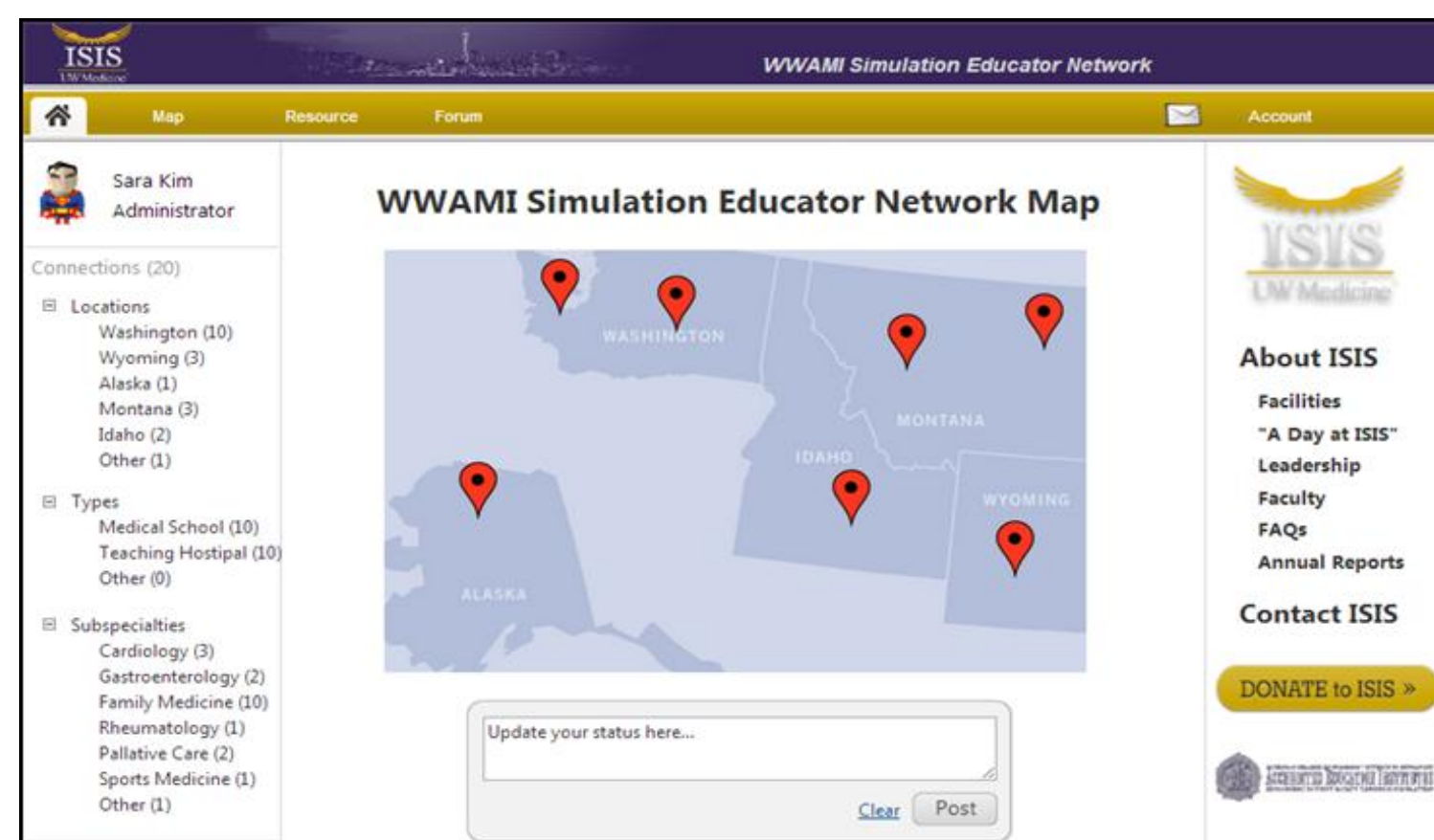
Impact

Result

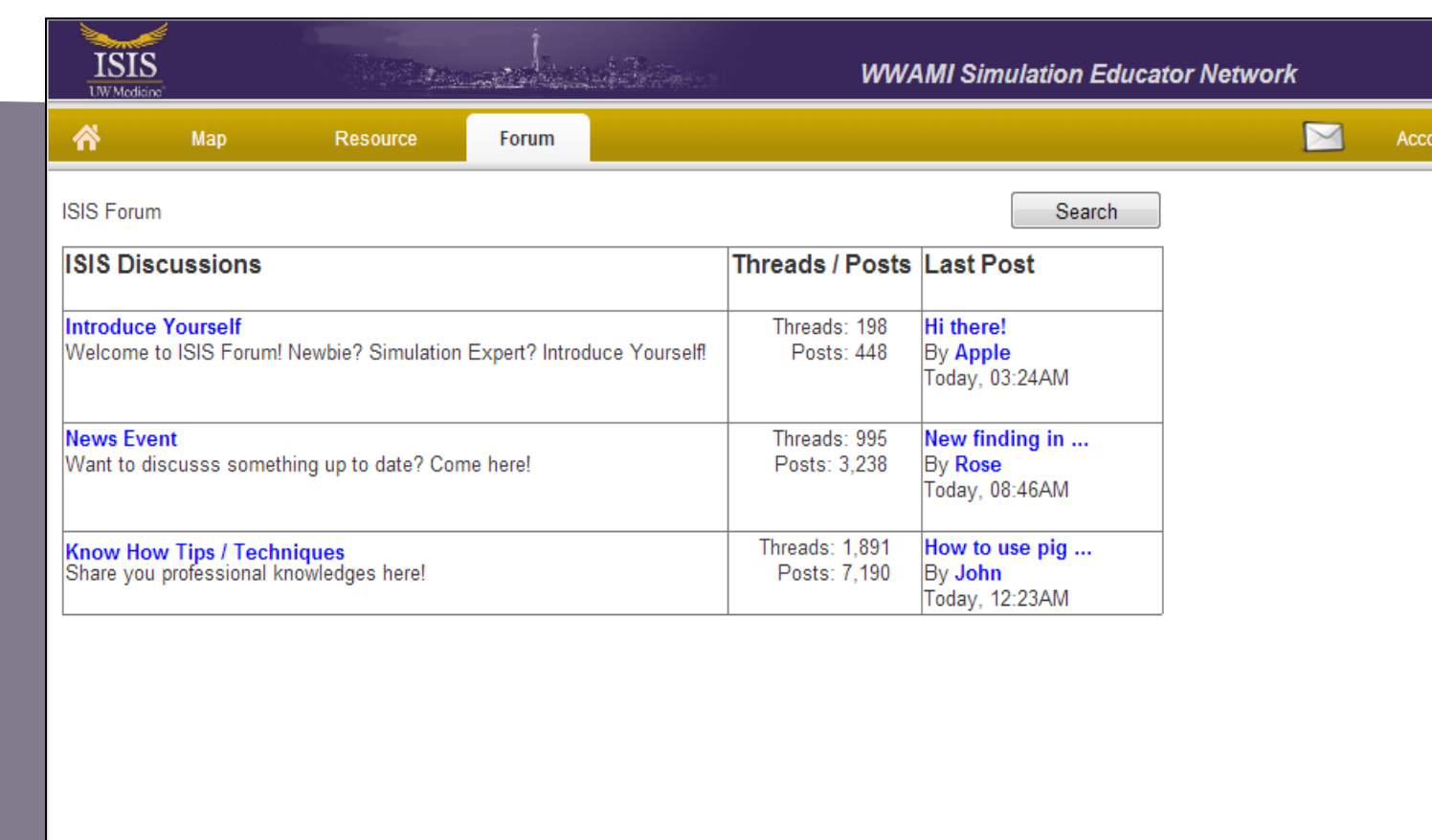
- A hi-fi prototype with social media features, including:
 - Interactive Map
 - ISIS Forum
 - Resource Search
 - Mail and Instant Message

Future Work

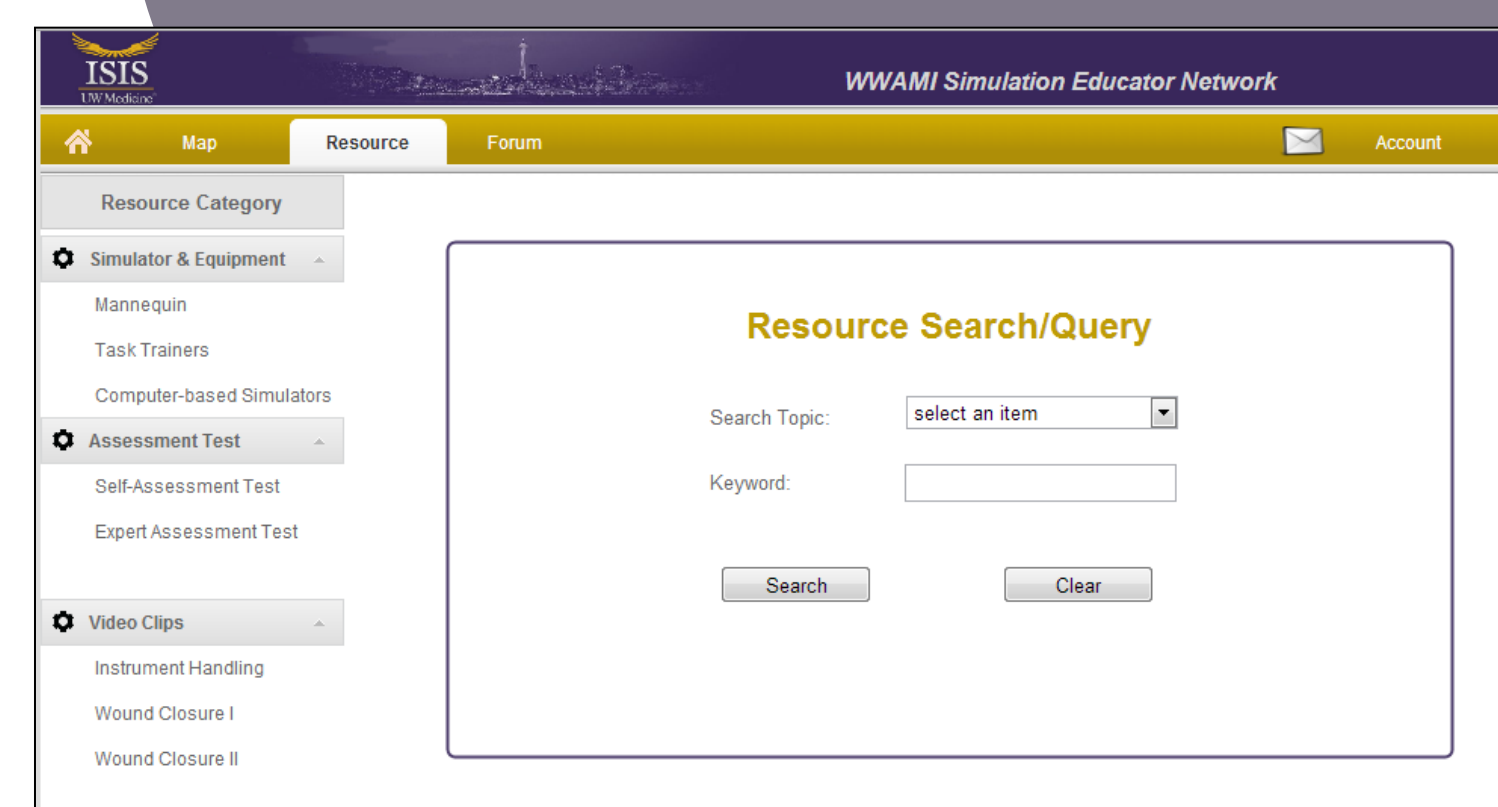
- Gather more feedback
- Design and implement the underlying database
- Build the actual website with additional features



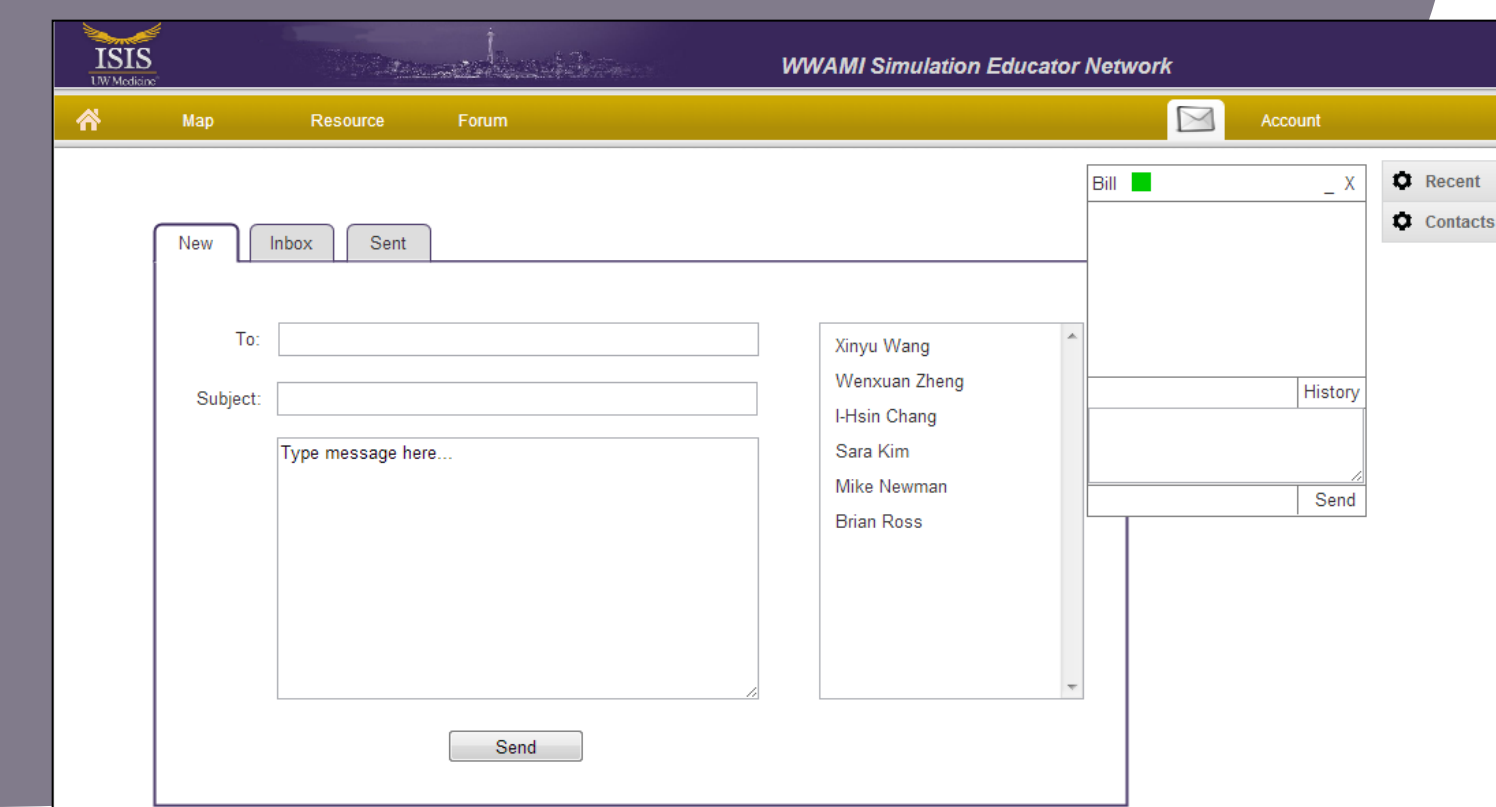
Interactive Map



ISIS Forum



Resource Search



Mail and Instant Message