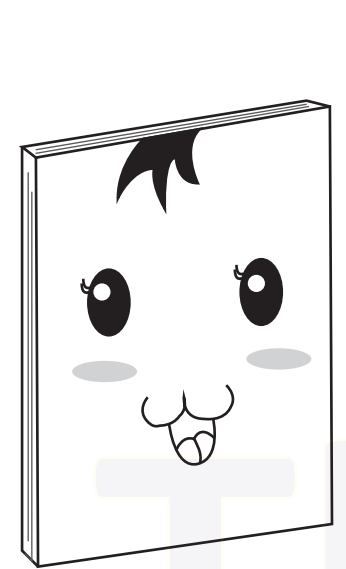
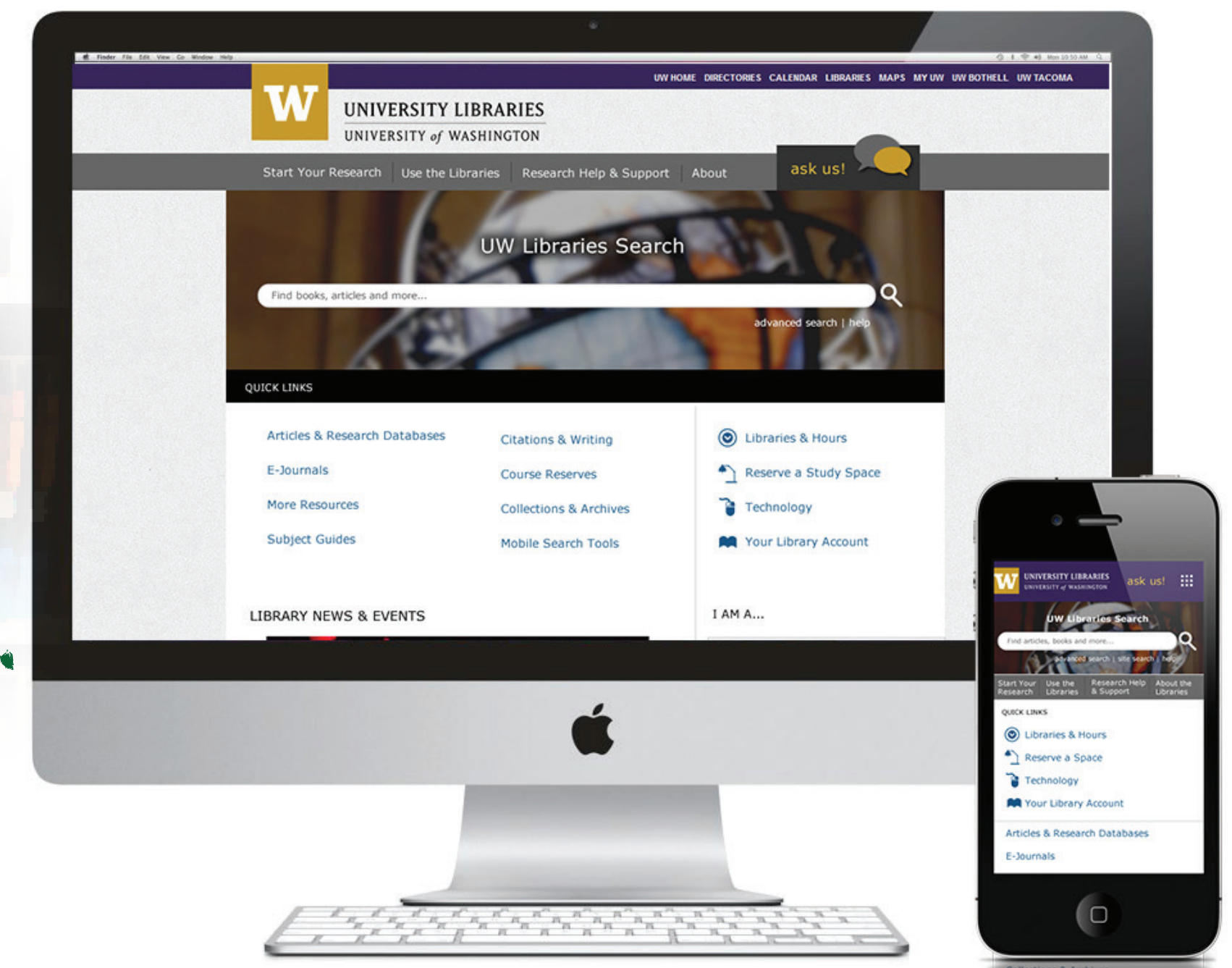
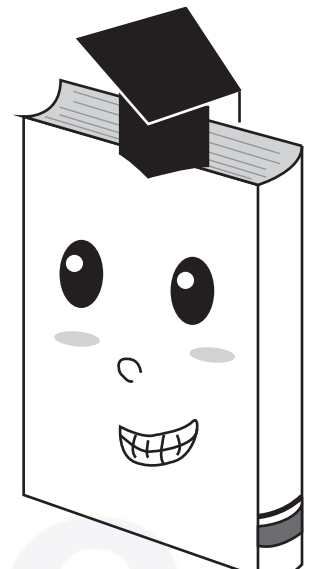


# UW LIBRARIES WEBSITE REDESIGN

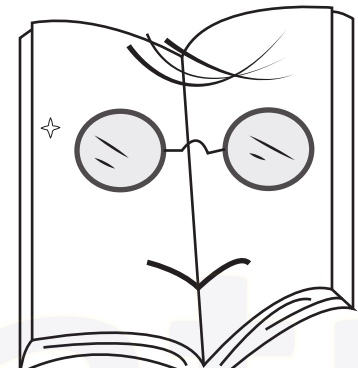
- Accessing the library any time, any place, on any device.



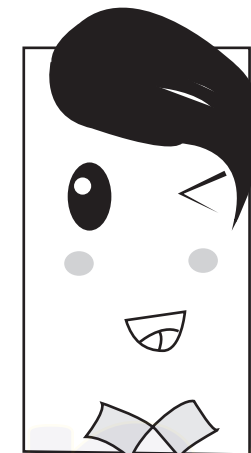
Undergraduate



Graduate



University Faculty  
and staff



Professional/Part-time  
Students

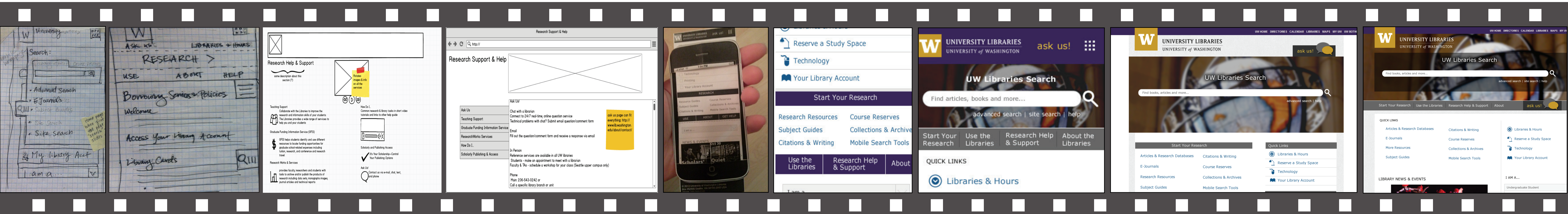
## Background:

In order to integrate a new catalog search system, the UW Libraries initiated a project to create a device-agnostic responsive website that allows the website and services to be accessed at any time, any place and by any user.

## Challenge:

- Patrons come from a wide range of disciplines and research skill levels
- Difficult to design appropriate interfaces and information architecture for a diverse audience

## Process:



## User Experience Research & Design Methodology:

- Heuristic evaluation
- Competitive analysis
- Persona design
- Focus group
- Contextual inquiry
- Stakeholder interview
- Card sort
- Wireframe
- Prototype
- A/B testing
- Rapid Iterative Testing and Evaluation



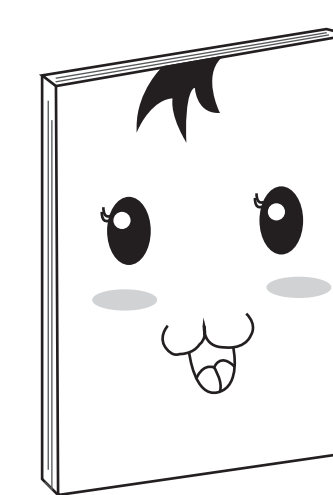
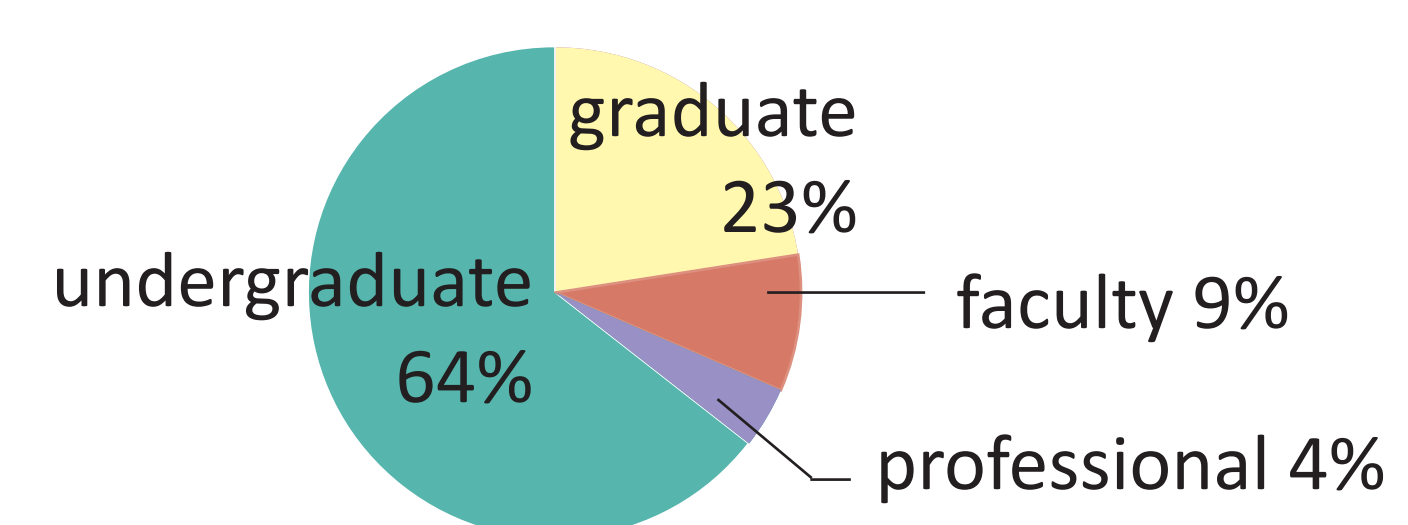
## Impact:

- **A More Structured Information Architecture**  
Helping both novice and expert researchers to utilize the website
- **Mobile First**  
The new website is device-agnostic, simple to navigate, and contains concise content.
- **"Research Help and Support" page**  
Created to promote and surface the many resources and services the UW library provides.
- **Portal pages**  
Organized and usable content for each patron.



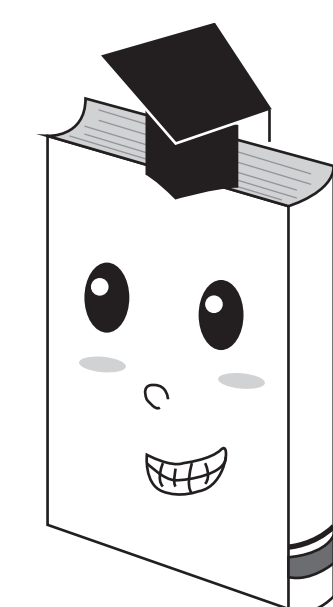
Experience it  
Yourself!

## Primary Users:



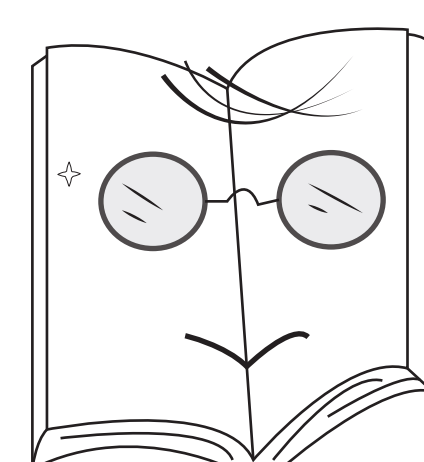
### Brooke Beginner

- New to the research process and academia
- Not aware of library resources, including eBooks
- On mobile device all the time



### Richard Researcher

- Dedicated full time graduate student working on a in-depth project
- Organized research material using Zotero and End-note
- Go-to familiar databases/pages
- Very important to be able to access to full text



### Sharon Scholar

- Has her own go-to databases. Often start with Google Scholar too
- Not always aware of what the library has to offer: learns about library related info through emails and colleagues
- May call upon librarians only to supplement research instructions