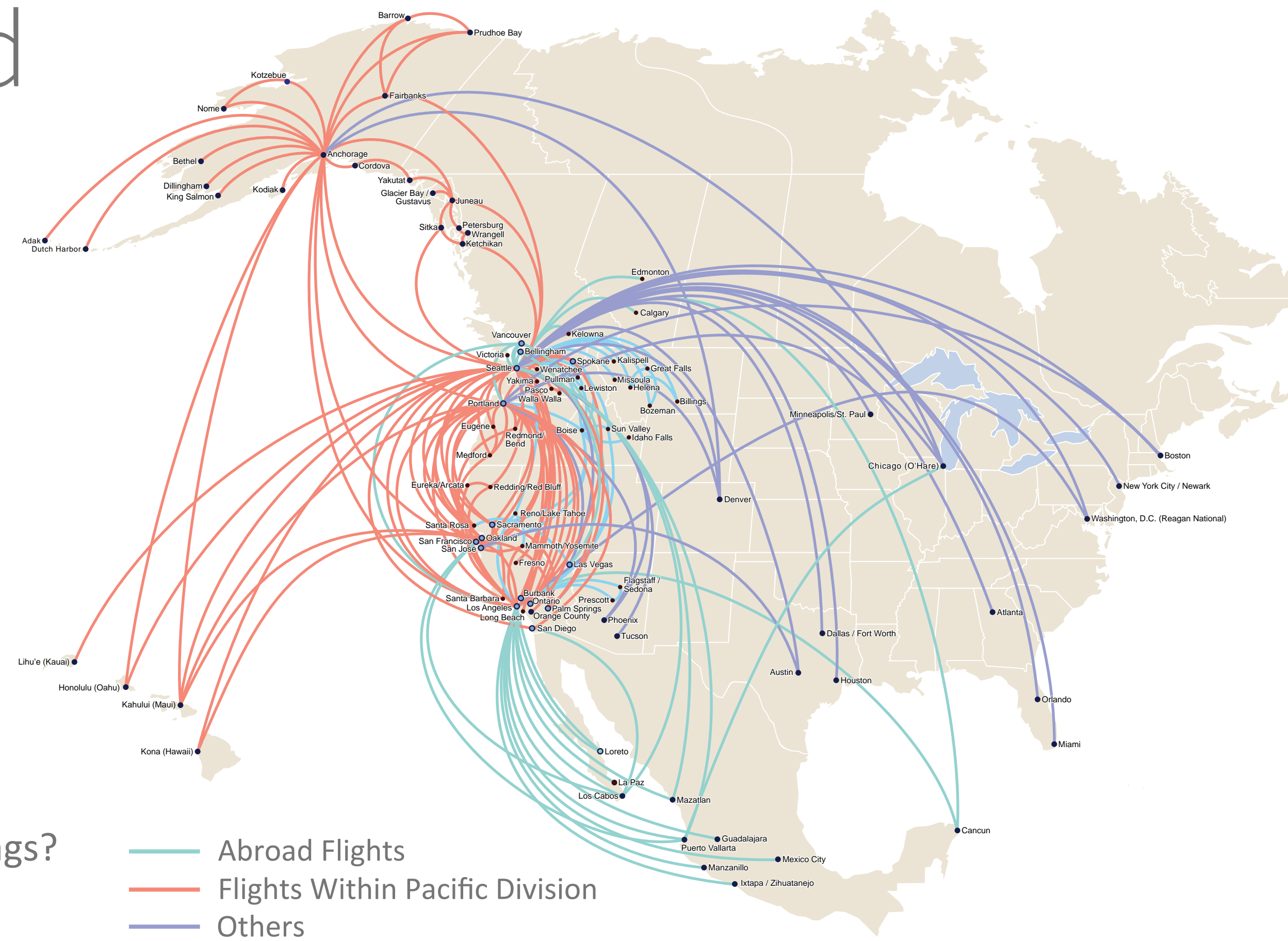


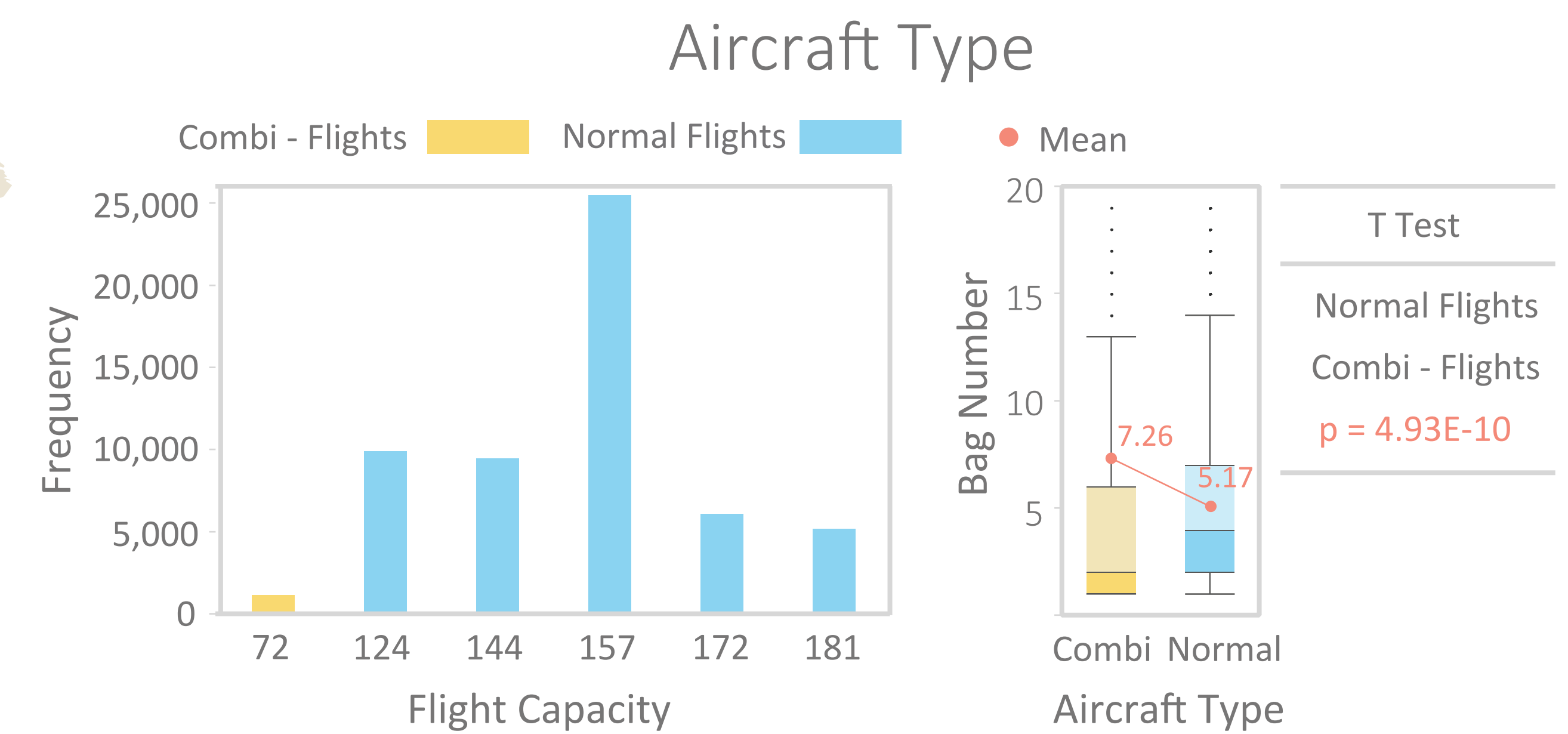
Alaska Airlines Carry-on Baggage Predictive Analytics

Project Background

After Oct. 30th, 2013, Alaska Airlines began to charge passengers \$25 each for the first and second checked bags, so a lot more passengers started to carry their bags on the flight. Since then passengers constantly experienced flight delay due to the fact that too many carry-on bags cannot be stowed in the limited overhead bins. If the approximate number of "problematic" carry-on bags of each flight can be known in advance, Alaska Airlines can prepare much earlier to avoid flight delay.



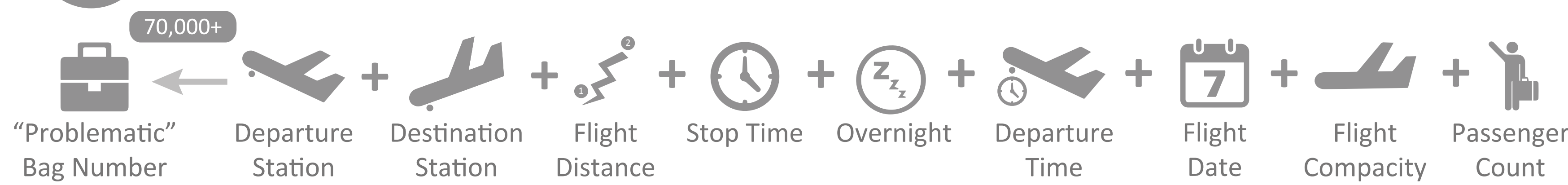
Predictive Analysis



Key Problem

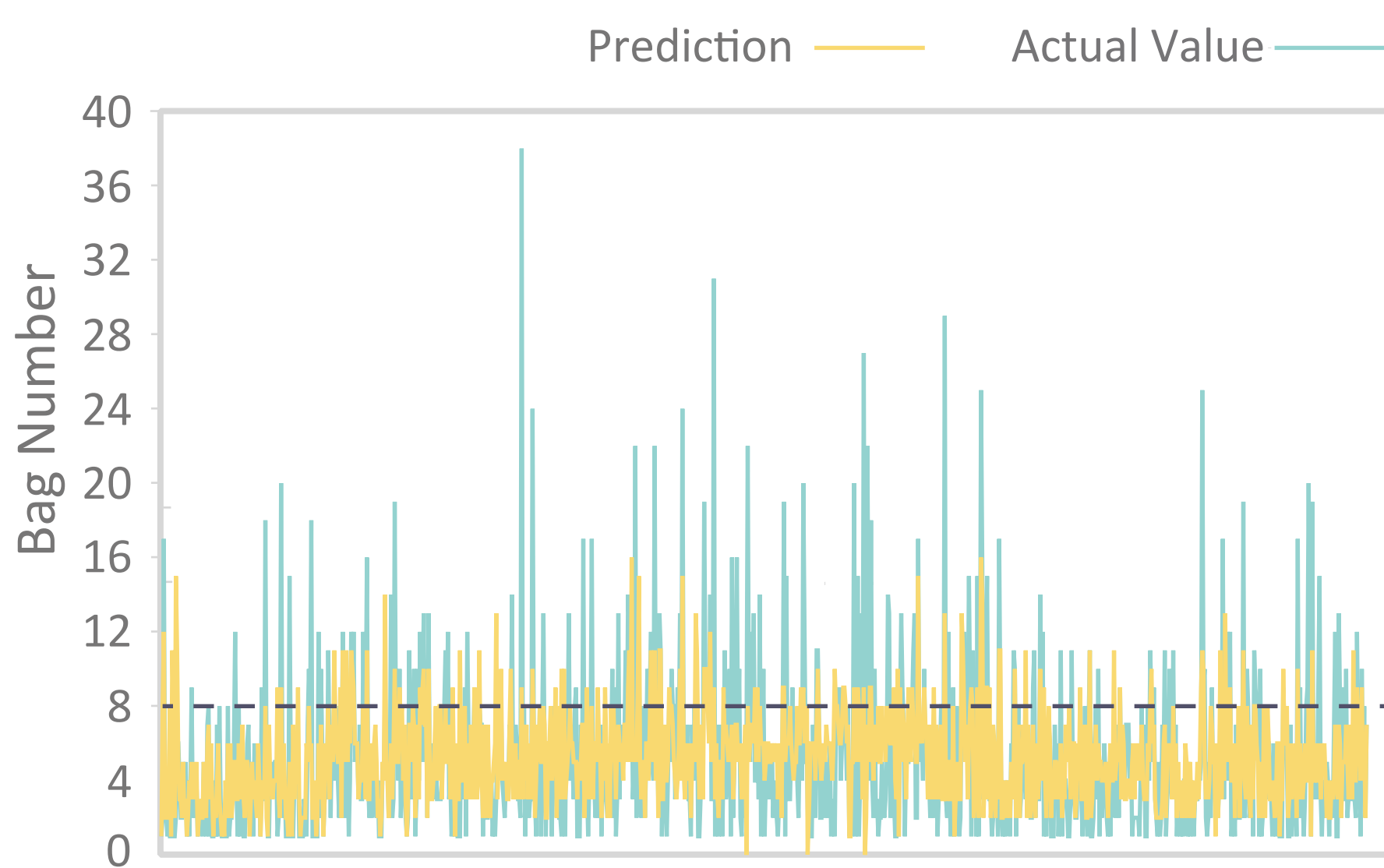
Which flights tend to have more "problematic" carry-on bags?

Data Preparation

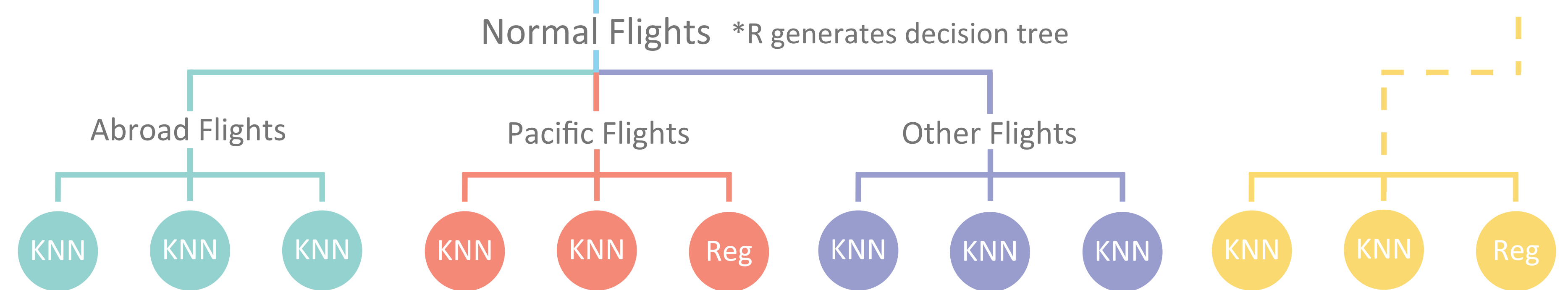
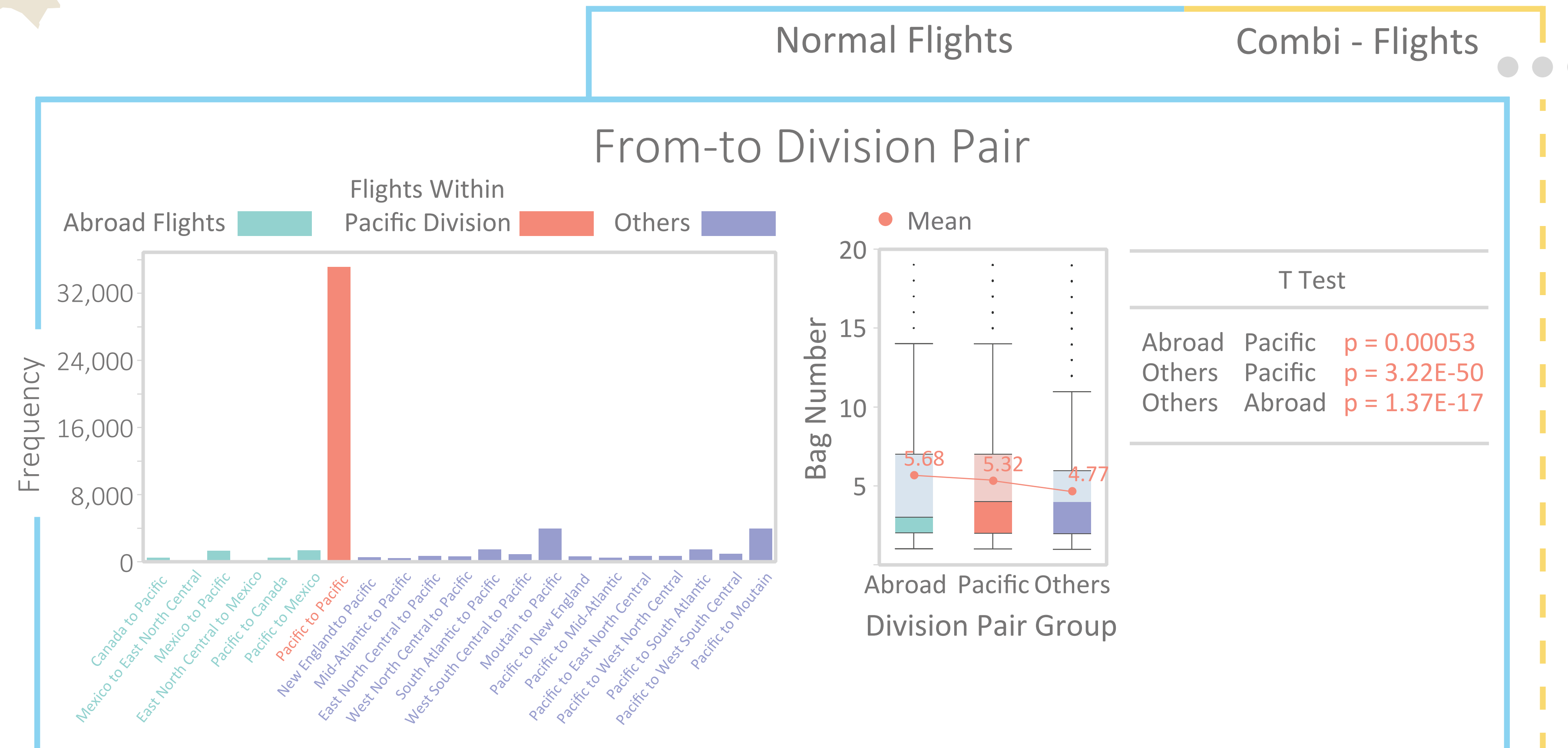
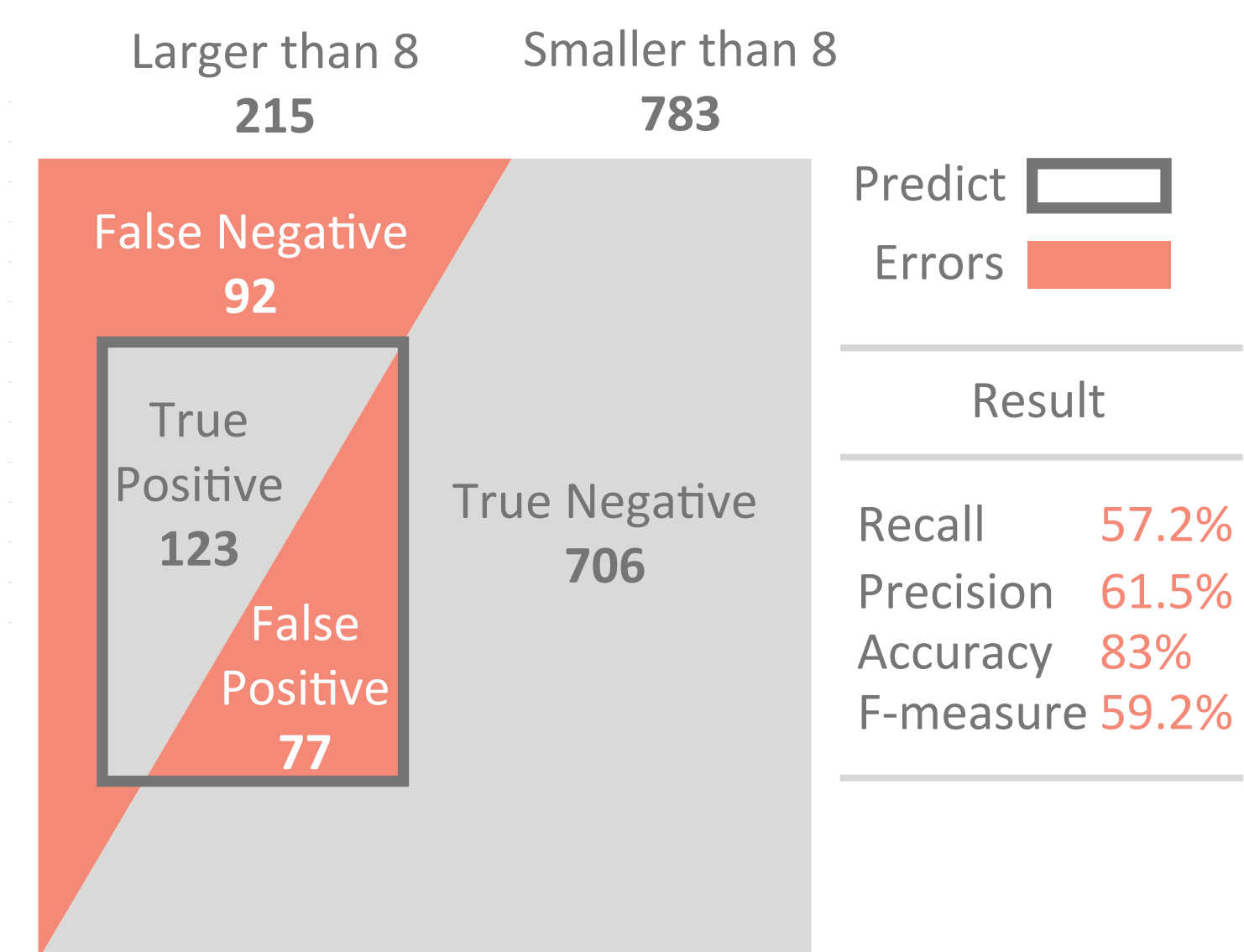


Results

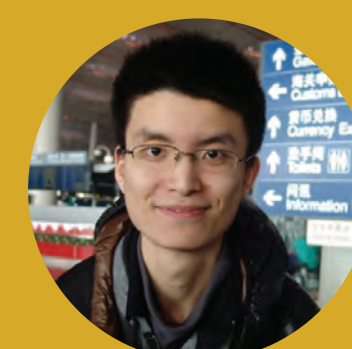
Bag Prediction VS Actual Value



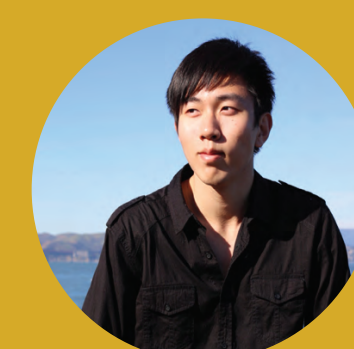
Precision and Recall (Threshold at Eight)



Chen Song
csong68@uw.edu



Yunhao Shen
yunhao@uw.edu



Ji Zheng
zj0331@uw.edu



Shuai Yu
ys90@uw.edu

