



Bike Works Volunteer Management

Sponsored by Bike Works



The Team



Troy Lu
Project Manager
Developer



Tyler Takeuchi
Developer
User Research



Jaiden York
UI/UX Design
User Research



Alexei Zhang
UI/UX Design
User Research



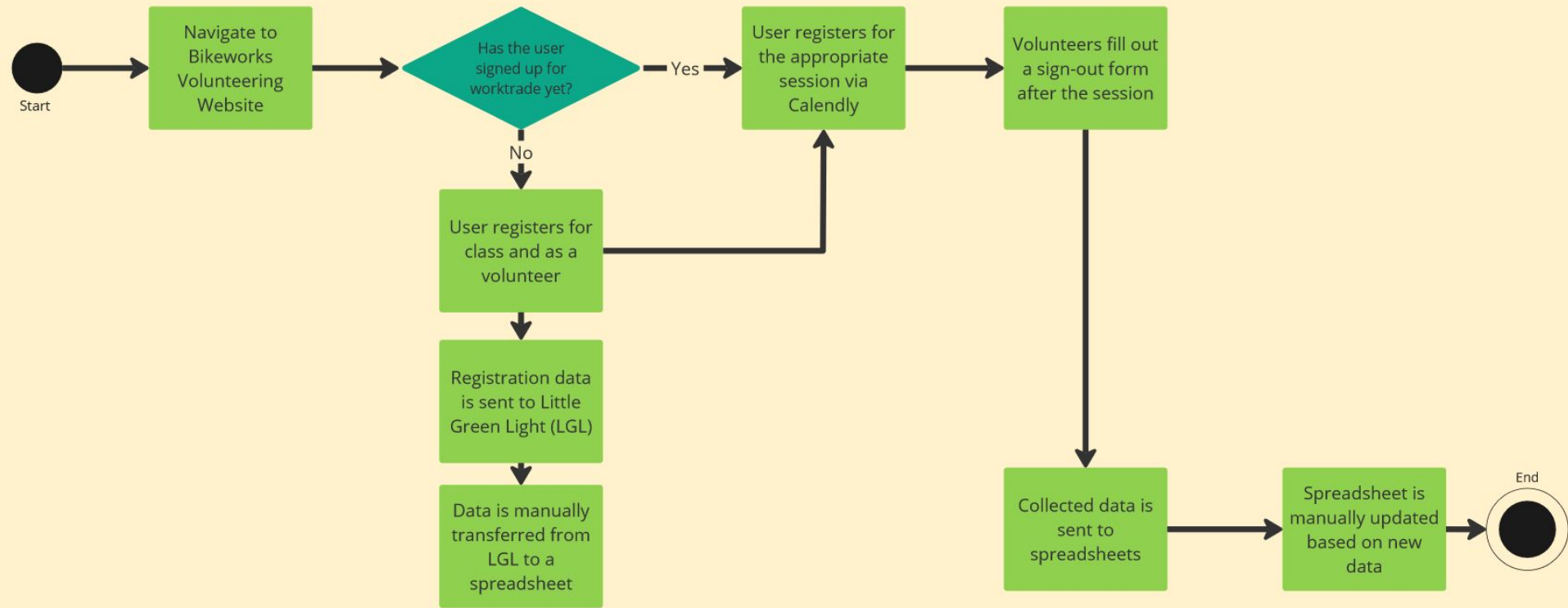
Matthew Cagle
Data Visualization
Back-end Development

Problem Context

- Bike Works tracks volunteer hours for work-trade system
- Current database system requires too much manual labor
- Time-consuming and prone to error



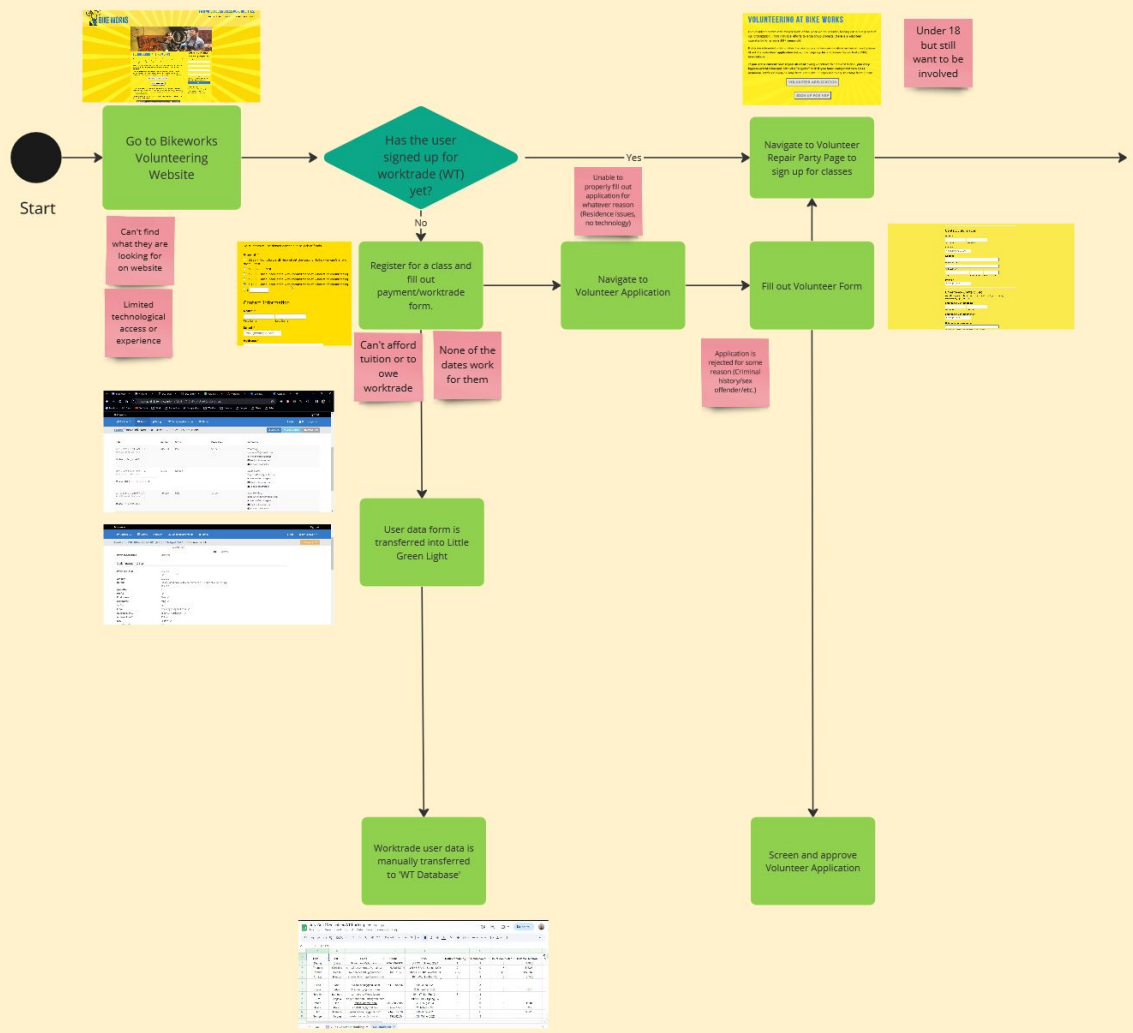
First name	Volunteer type	Hours at VRP today	Which class(es) are you completing work trade for?	Total work trade hours owed	Questions, comments, or feedback:	DROP INS
	Registered online (Calendly)					
	Registered online (Calendly)					
Goeun	Work trade		3 Bike repair 101	Not sure		
Eugene	Work trade		2 Bike repair 201	Not sure		
	Drop-in					
Wen	Work trade		2 Bike repair 101		9	
Simone	Work trade		2 Bike repair 101		6	



How might Bike Works staff achieve a **greater level of efficiency** when tracking work trade data so that they can focus their time on more **important tasks**, such as hosting classes and fixing/selling old bikes?

Research Insights

- Automation can allow for **-human error** , **+efficiency** , **+data quality**
 - Low-code/no-code solutions provide various automation functionalities
- Existing System → New System
 - **Communication** is required between all involved parties to ensure for a useful product
 - Positives and negatives of low-code/no-code solutions in the context of our problem
 - Multiple views based on type of user (volunteer/staff)



Personas: Volunteer Management System

Jim | Staff Member at Bike Works

- Frustrated with the amount of manual effort required by the current system
- Wants to spend less time working on the spreadsheet



Personas: Volunteer Management System

Laura | Bike Works Work Trade Volunteer

- Struggles to find how many hours she has left on her work trade.
- Wants to spend less time browsing the Bike Works website and asking staff regarding her remaining work trade hours.



Key Features



softr



Airtable

- **Softr:** User-facing interface, used by staff and volunteers
 - Displays information related to work trade volunteers
 - Automates emails detailing their work trade progress and other information
- **Airtable:** back-end system, stores data displayed by Softr
 - Intakes data from a user-submitted form
 - Automations: completion/inactivity emails and data inputs

[Check Volunteer Hours](#)[VPP Sign-Out Form](#)[REGISTER FOR VRP](#)

Two Wheels. Endless Possibilities.

Bike Works promotes the bicycle as a vehicle for change to empower youth and build resilient communities. Since 1991 we've worked to educate and empower youth, and make bicycling accessible and affordable to the Seattle community.

[Check Volunteer Hours](#)

Ethical Considerations

- Volunteer Confidentiality: restricting access to volunteer-specific information.
- Transparency: volunteers have the right to know what the organization does with their information.
- Beneficence: ensure the system is designed and implemented to maximize the benefits for both volunteers/organization.

User Testing & Validation

- Approach: Functionality → Design/Aesthetics
- Weekly testing of revised and new features over Zoom with sponsor

As of 5/10/24, Bike Works has implemented our system into their workflow, and additional feedback will be provided in the upcoming week(s).

Next Steps

- **After Capstone, we will be transferring ownership of the Airtable and Softr projects to Jim, who we have been working with over the last two quarters**



Thank you for your time!

Questions?