



SEACAT



Seattle Emergency Awareness by
Catastrophe Awareness Team

Our Team



Emma Spence



Shawn Sun



Michelle Odnert



Jorey Papritz



Lex Nguyen

The Context

01

The 'Big One' is coming

Residents are uninformed
on shelter locations

02

03

Concise information
is hard to come by

Seattle area is susceptible to a
number of other natural disasters

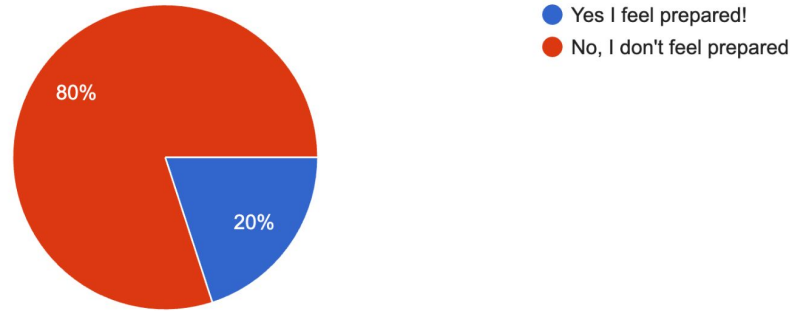
04

Problem Statement

How can new residents to the city of Seattle be better prepared in the case of natural disasters specific to the area... particularly for Earthquakes?

Key Insights

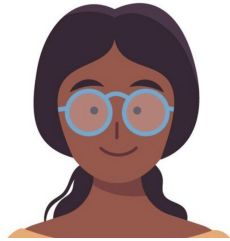
Perceived Adequacy of Resources: Do you believe the current resources available for disaster preparedness and response in Seattle are adequate?



- ❑ Survey of Seattle residents expressed:
 - **0%** are aware of earthquake shelter locations
 - general anxiety/fear about earthquakes
- ❑ Seattle has **135 emergency shelters** across the city
- ❑ Existing shelter maps lack **UI** and **accessibility**

Seattle Disaster Preparedness and Response: Community Insights Survey, 2024
Seattle Community Emergency Hubs, 2023

Personas



Amara
UW Grad Student

International student here for school
Concerned about 'the Big One'
Did not grow up learning about earthquakes



Theo
Software Engineer - SLU

Moved to Seattle for work & nature
Generally anxious and a planner
Would rather be 'over prepared'



Key Features



Downloadable
Preparedness Guide



Display past
earthquakes info.



Printable
Directions



Shelter Locations
with Google Maps API

User Testing

Create Tests

- ❖ Map validation
- ❖ Location assurance
- ❖ Navigation intuition
- ❖ Preparedness guide clarity

Diverse user input

- ❖ Shelter choosability
- ❖ Okay with location sharing
- ❖ Add markers
- ❖ Add images and resources

Direction iteration

- ❖ Revamp UI
- ❖ Map interactivity
- ❖ Resources, resources, resources!

SEACAT

Seattle Emergency Awareness by the Catastrophe Awareness Team

New to the Seattle area?
Unsure of what to do during an earthquake?

Our comprehensive resource is designed to answer these questions and more. Navigate our site to discover vital information that can prepare you for natural disasters, ensuring your safety and peace of mind.

Be prepared for when disaster strikes. [Find out more.](#)

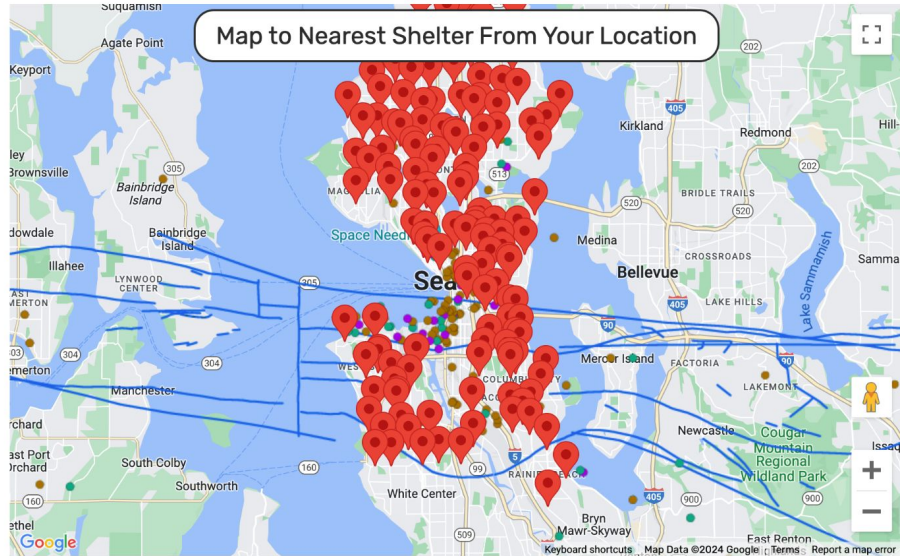


Map to a Shelter Near You!

Key:

-  Past Earthquakes
-  Past Earthquakes When Zoomed
-  Shelter Locations
-  Fault Lines
-  Your Location

1. Click on a shelter location for more information.
2. Click the map button to show directions from your current location to the nearest shelter(wait 5-6 seconds).



Earthquake Preparation Guide

Living in the Pacific Northwest, particularly the Seattle area, means being aware of the seismic risks associated with earthquakes. Being prepared is crucial to ensure your safety and the well-being of your community. This guide provides practical steps to help you prepare for, survive, and recover from an earthquake in the Seattle region.

[Download as PDF](#)

Before an Earthquake

Preparation Steps

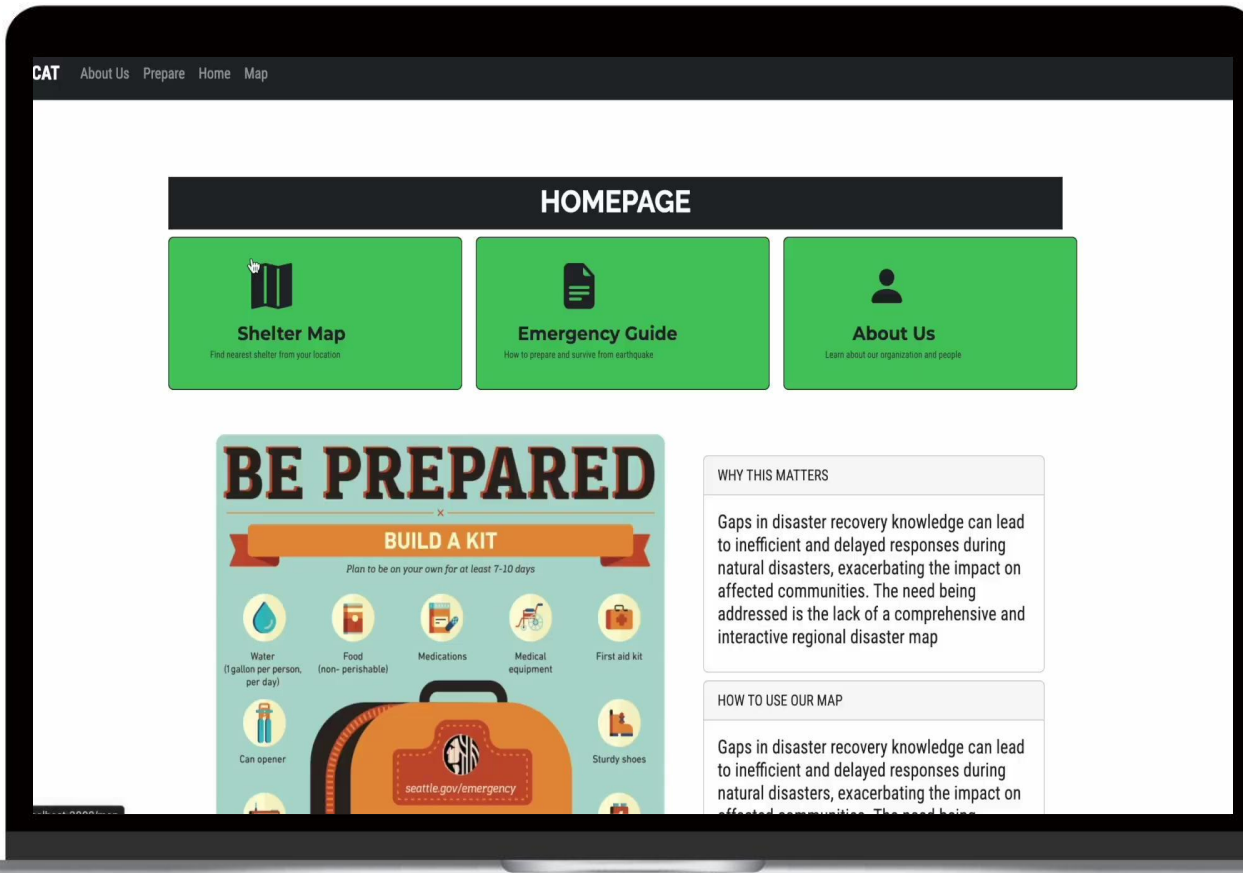
Create an emergency plan that covers the following:

1. Actions for all household members during an earthquake.
2. Communication and predetermined meeting places.
3. Utility safety procedures for gas, water, and electricity.

Tip: Print out this guide and keep it accessible to all household members for quick reference during an emergency!



Demo of Our Functioning Prototype



Ethical Considerations



Location Privacy



Don't sell info



Equal access



Data security

Limitations



Due to limitations imposed by the Federal Emergency Management Agency (FEMA) on the use of data from their public GIS server, the National Shelter System (NSS) data, which is created by FEMA, was not incorporated into the map feature.

Shutting Down

01

Delete Google Maps API and Map ID

02

Back up our repo

03

Notice on landing page

04

Delete our repo



THANK YOU

Emma
Shawn
Michelle
Jorey
Lex

