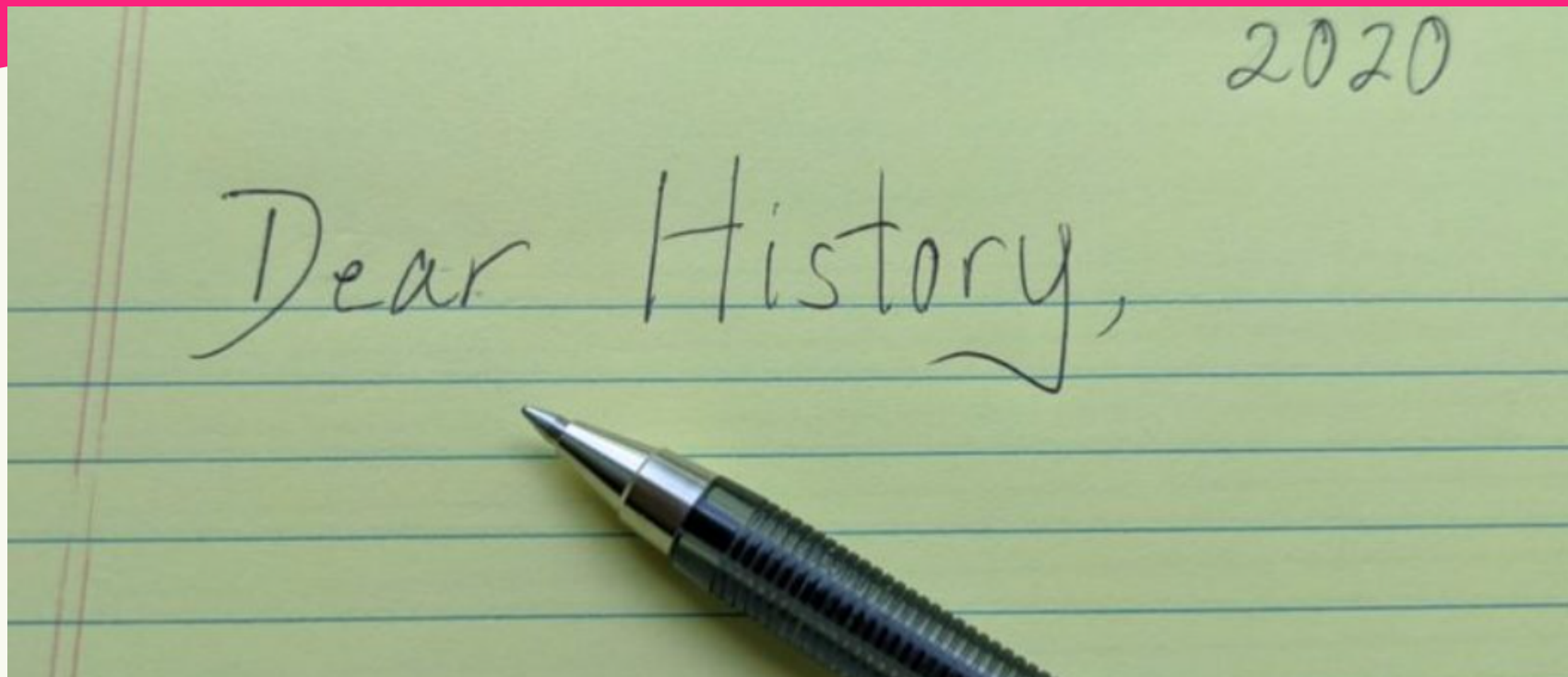


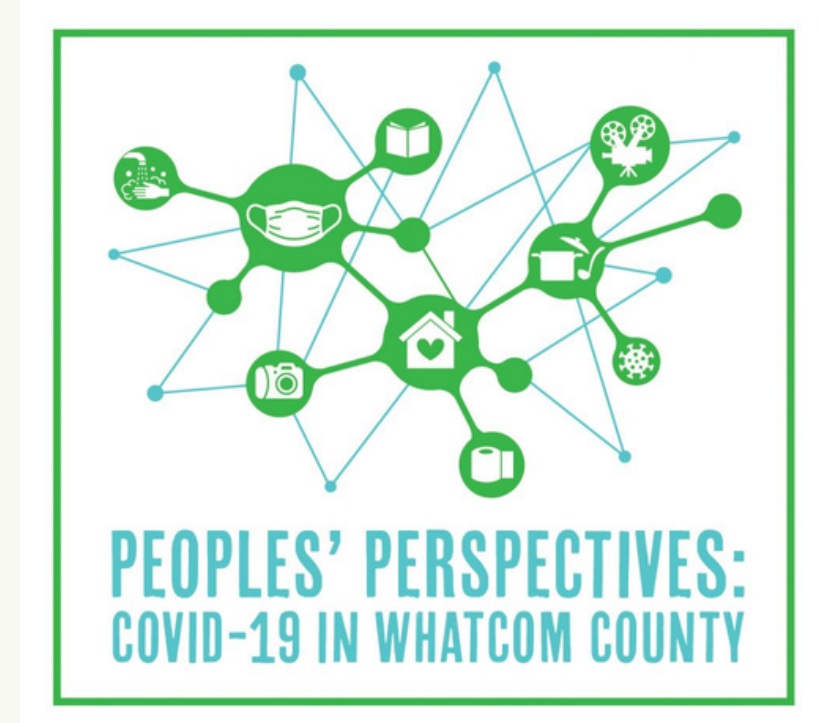
# OMEKA S:

## BEST PRACTICES AND METADATA FOR BELLINGHAM PUBLIC LIBRARY'S COMMUNITY ARCHIVE



### 🌟 *Peoples' Perspectives:*

A multimedia community initiative to collect and archive experiences during COVID-19 in Whatcom County in order to preserve them for future generations



### 🌟 **My Project:**

Provide metadata recommendations and best practices for BPL to implement with Omeka S, a content management system for online digital collections