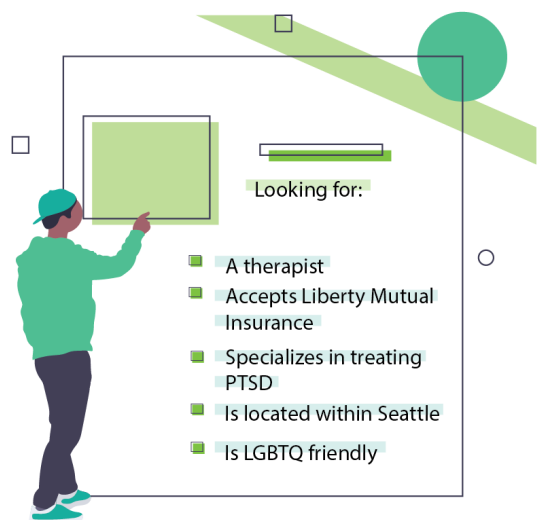


# PearCare

## Better patient-provider pairs, better mental health care

About 1 in 5 adults in the U.S. (46.6 million) experience mental illness, yet 60% do not receive treatment.

PearCare makes it easy to find a mental health care provider that is right for you.



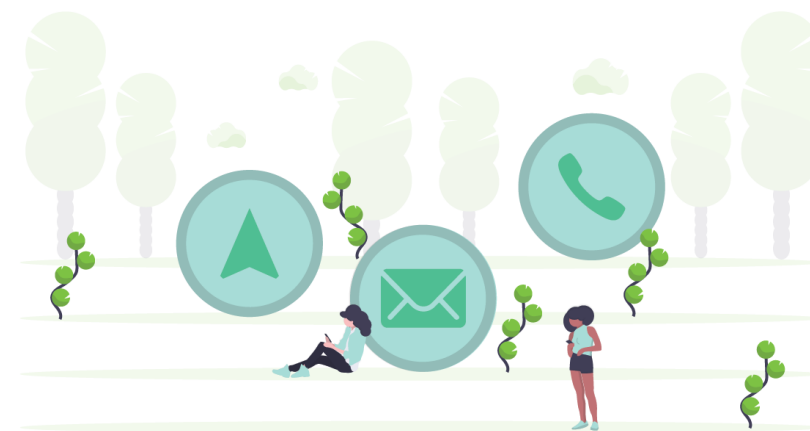
### Tell us what matters to you

We make searching for care easy by asking the right questions through a two-step questionnaire, no sign up or payment required



### We match you with providers that fit your needs

View personalized results and reasons why we think you would make a good match with a provider, based on your answers to our questionnaire



### Connect with providers you're interested in

Reaching out to a provider takes one click from our platform. We let you know who is available to meet, how to best contact them, and what to expect

**Michael Ngo**  
*Developer*

**Daniel Colina**  
*Developer*

**Christine Smet**  
*UX Designer*

**Krystal Liang**  
*Project Manager*



**Information School**  
UNIVERSITY of WASHINGTON