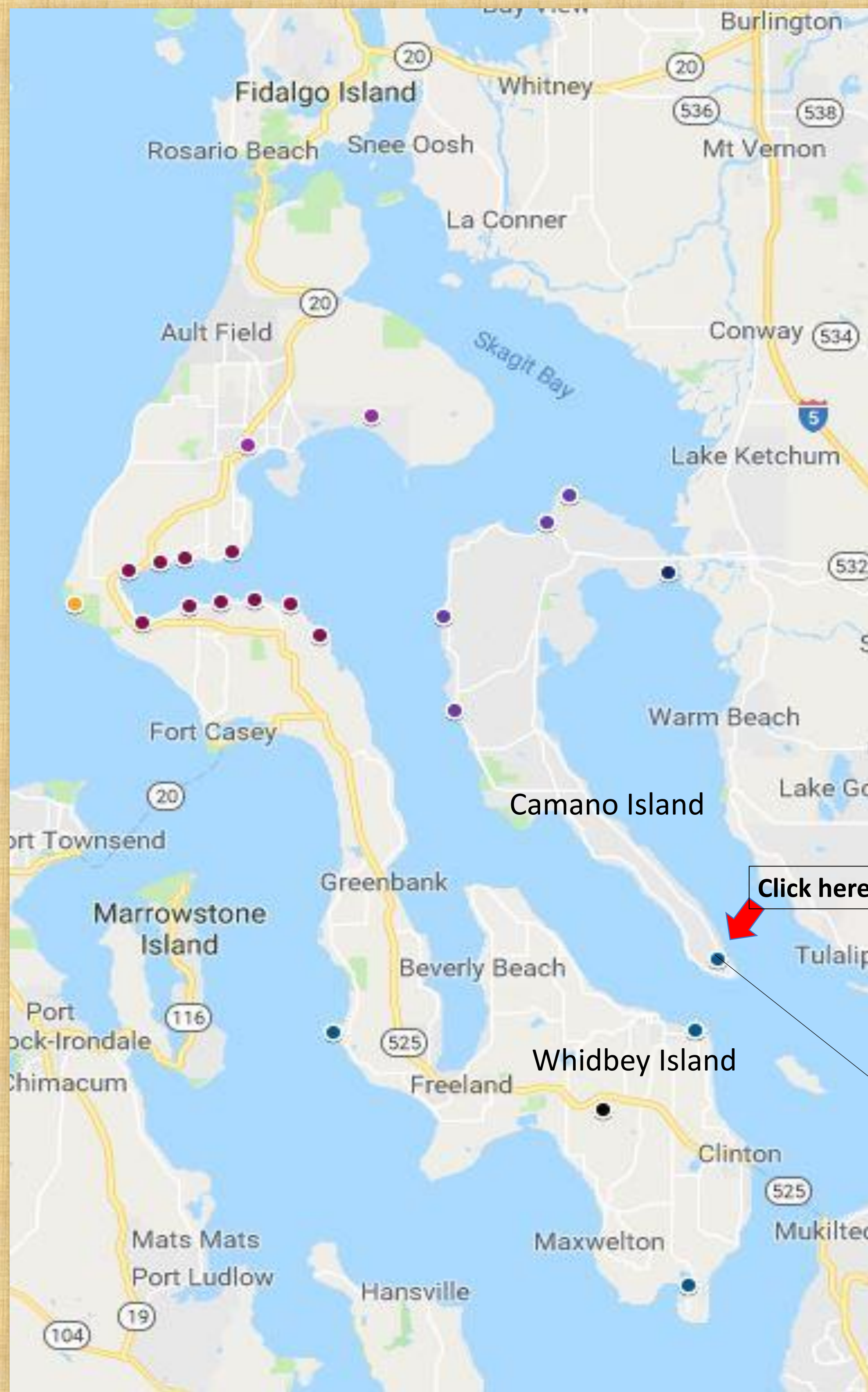
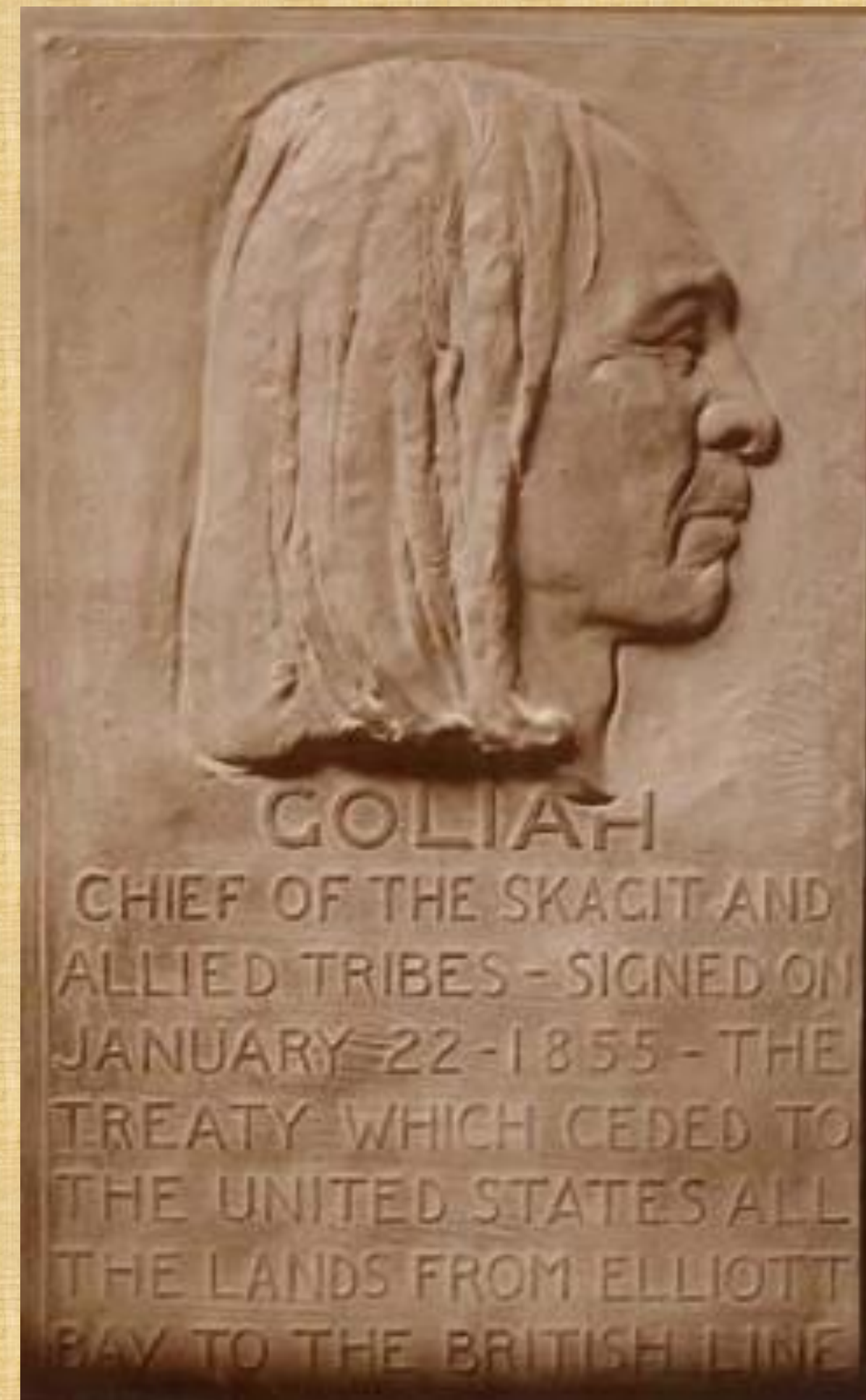


# Native Tribes of Whidbey and Camano Islands



Interactive Way finder Map of primary Native settlements



University of Washington Libraries,  
Special Collections, NA4029

**Camano Head – Xwheshud**  
Across the Saratoga Passage on Camano Island another Snohomish native village location named Xwheshud.

## The Problem

At the Island County Historical Society & Museum in Coupeville, WA, the most fielded question by docents and volunteers from the thousands of visitors and researchers each year is “What was life like for the Native American tribes that lived here and did they shape the development Island County? In hopes of answering these questions, I designed a tool that can provide this information, interactively.

## Information Opportunity

- Allows researchers and visitors a way to interact with information on Native tribes and their contribution to Whidbey and Camano Island.
- Provide a history of native settlers way of life by learning about their customs, traditions, and cultivation of the land.
- View images, artifacts, and stories that define the cultural history of Whidbey and Camano Island.

## Solution

- Develop interactive way finder map that highlights all permanent and temporary settlements on Whidbey & Camano Island.
- Visitors and researchers are able to use a mouse or stylus to click on a map plot point that will provide more information about the tribe and settlement on specific areas of the map.